

**AZ-103.78q**

Number: AZ-103  
Passing Score: 800  
Time Limit: 120 min

**AZ-103**



**Website:** <https://vceplus.com>

**VCE to PDF Converter:** <https://vceplus.com/vce-to-pdf/>

**Facebook:** <https://www.facebook.com/VCE.For.All.VN/>

**Twitter :** [https://twitter.com/VCE\\_Plus](https://twitter.com/VCE_Plus)

<https://vceplus.com/>

**Microsoft Azure Administrator**

**Question Set 1**

**QUESTION 1**

You have an Azure subscription named Subscription1 that contains an Azure Log Analytics workspace named Workspace1.

You need to view the error events from a table named Event.

Which query should you run in Workspace1?

- A. `Get-Event Event | where ($_.EventType -eq "error")`
- B. `Get-Event Event | where ($_.EventType == "error")`
- C. `search in (Event) * | where EventType -eq "error"`
- D. `search in (Event) "error"`
- E. `select *from Event where EventType == "error"`
- F. `Event | where EventType is "error"`

**Correct Answer: D**

**Section: [none]**

**Explanation**

**Explanation/Reference:**

Explanation:

To search a term in a specific table, add in (table-name) just after the search operator

References: <https://docs.microsoft.com/en-us/azure/azure-monitor/log-query/search-queries> <https://docs.microsoft.com/en-us/azure/azure-monitor/log-query/get-started-portal>

## QUESTION 2

You have an Azure subscription named Subscription1. Subscription1 contains the resource groups in the following table.

Name	Azure region	Policy
RG1	West Europe	Policy1
RG2	North Europe	Policy2
RG3	France Central	Policy3

RG1 has a web app named WebApp1. WebApp1 is located in West Europe.

You move WebApp1 to RG2.



<https://vceplus.com/>

What is the effect of the move?

- A. The App Service plan for WebApp1 moves to North Europe. Policy2 applies to WebApp1.
- B. The App Service plan for WebApp1 remains in West Europe. Policy2 applies to WebApp1.
- C. The App Service plan for WebApp1 moves to North Europe. Policy1 applies to WebApp1.
- D. The App Service plan for WebApp1 remains in West Europe. Policy1 applies to WebApp1.

**Correct Answer: B**

**Section: [none]**

**Explanation**



**Explanation/Reference:**

Explanation:

You can move an app to another App Service plan, as long as the source plan and the target plan are in the same resource group and geographical region. The region in which your app runs is the region of the App Service plan it's in. However, you cannot change an App Service plan's region.

References: <https://docs.microsoft.com/en-us/azure/app-service/app-service-plan-manage>

### QUESTION 3

You have an Azure subscription that contains a resource group named RG1. RG1 contains 100 virtual machines.

Your company has three cost centers named Manufacturing, Sales, and Finance.

You need to associate each virtual machine to a specific cost center.

What should you do?

- A. Configure locks for the virtual machine.
- B. Add an extension to the virtual machines.
- C. Assign tags to the virtual machines.
- D. Modify the inventory settings of the virtual machine.

**Correct Answer:** C

**Section:** [none]

**Explanation**

**Explanation/Reference:**

References: <https://docs.microsoft.com/en-us/azure/billing/billing-getting-started>

<https://docs.microsoft.com/en-us/azure/azure-resource-manager/resource-group-using-tags>

#### QUESTION 4

**Note:** This question is part of a series of questions that present the same scenario. Each question in the series contains a unique solution that might meet the stated goals. Some question sets might have more than one correct solution, while others might not have a correct solution.

**After you answer a question in this section, you will NOT be able to return to it. As a result, these questions will not appear in the review screen.**

You have an Azure subscription named Subscription1. Subscription1 contains a resource group named RG1. RG1 contains resources that were deployed by using

templates.

You need to view the date and time when the resources were created in RG1.

Solution: From the Subscriptions blade, you select the subscription, and then click **Programmatic deployment**.

Does this meet the goal?

- A. Yes
- B. No

**Correct Answer:** B

**Section:** [none]

**Explanation**

**Explanation/Reference:**

### QUESTION 5

**Note:** This question is part of a series of questions that present the same scenario. Each question in the series contains a unique solution that might meet the stated goals. Some question sets might have more than one correct solution, while others might not have a correct solution.

**After you answer a question in this section, you will NOT be able to return to it. As a result, these questions will not appear in the review screen.**

You have an Azure subscription named Subscription1. Subscription1 contains a resource group named RG1. RG1 contains resources that were deployed by using templates.

You need to view the date and time when the resources were created in RG1.

Solution: From the Subscriptions blade, you select the subscription, and then click **Resource providers**.

Does this meet the goal?

- A. Yes
- B. No

**Correct Answer:** B

**Section:** [none]

**Explanation**

**Explanation/Reference:**



### QUESTION 6

**Note:** This question is part of a series of questions that present the same scenario. Each question in the series contains a unique solution that might meet the stated goals. Some question sets might have more than one correct solution, while others might not have a correct solution.

**After you answer a question in this section, you will NOT be able to return to it. As a result, these questions will not appear in the review screen.**

You have an Azure subscription named Subscription1. Subscription1 contains a resource group named RG1. RG1 contains resources that were deployed by using templates.

You need to view the date and time when the resources were created in RG1.

Solution: From the RG1 blade, you click **Automation script**.

Does this meet the goal?

- A. Yes
- B. No

**Correct Answer:** B

**Section:** [none]

**Explanation**

**Explanation/Reference:**

#### **QUESTION 7**

You have an Azure policy as shown in the following exhibit.



SCOPE

• Scope [\(Learn more about setting the scope\)](#)

Subscription1

Exclusions

Subscription1/ContosoRG1

BASICS

• Policy definition

Not allowed resource types

• Assignment name ⓘ

Not allowed resource types

Assignment ID

/subscription/5eb8d0b6-ce3b-4ce0-a631-9f5321bedabb/providers/Microsoft.Authorization/policy/Assignments/0e6fb866bf854f54accac2a9

Description

Assigned by

admin1@contoso.com

PARAMETERS

• Not allowed resource types ⓘ

Microsoft.Sql/servers

What is the effect of the policy?

- A. You are prevented from creating Azure SQL Servers in ContosoRG1 only.
- B. You can create Azure SQL servers in ContosoRG1 only.
- C. You can create Azure SQL servers in any resource group within Subscription1.
- D. You are prevented from creating Azure SQL servers anywhere in Subscription1.

**Correct Answer:** B

**Section:** [none]

**Explanation**

**Explanation/Reference:**

Explanation:

You are prevented from creating Azure SQL servers anywhere in Subscription 1 with the exception of ContosoRG1

#### QUESTION 8

**Note: This question is part of a series of questions that present the same scenario. Each question in the series contains a unique solution that might meet the stated goals. Some question sets might have more than one correct solution, while others might not have a correct solution.**

**After you answer a question in this section, you will NOT be able to return to it. As a result, these questions will not appear in the review screen.**

You have an Azure Active Directory (Azure AD) tenant named Adatum and an Azure Subscription named Subscription1. Adatum contains a group named Developers. Subscription1 contains a resource group named Dev.

You need to provide the Developers group with the ability to create Azure logic apps in the Dev resource group.

Solution: On Subscription1, you assign the DevTest Labs User role to the Developers group.

Does this meet the goal?

- A. Yes
- B. No

**Correct Answer:** B

**Section:** [none]

**Explanation**

**Explanation/Reference:**

Explanation:



DevTest Labs User role only lets you connect, start, restart, and shutdown virtual machines in your Azure DevTest Labs. The Logic App Contributor role lets you manage logic app, but not access to them. It provides access to view, edit, and update a logic app.

References: <https://docs.microsoft.com/en-us/azure/role-based-access-control/built-in-roles> <https://docs.microsoft.com/en-us/azure/logic-apps/logic-apps-securing-a-logic-app>

### QUESTION 9

You have an Azure Active Directory (Azure AD) tenant that contains 5,000 user accounts.

You create a new user account named AdminUser1.

You need to assign the User administrator administrative role to AdminUser1.

What should you do from the user account properties?

- A. From the Directory role blade, modify the directory role.
- B. From the Licenses blade, assign a new license.
- C. From the Groups blade, invite the user account to a new group.

**Correct Answer:** A

**Section:** [none]

**Explanation**



### Explanation/Reference:

Explanation:

Assign a role to a user

1. Sign in to the Azure portal with an account that's a global admin or privileged role admin for the directory.
2. Select Azure Active Directory, select Users, and then select a specific user from the list.
3. For the selected user, select Directory role, select Add role, and then pick the appropriate admin roles from the Directory roles list, such as Conditional access administrator.
4. Press Select to save.

References: <https://docs.microsoft.com/en-us/azure/active-directory/fundamentals/active-directory-users-assign-role-azure-portal>

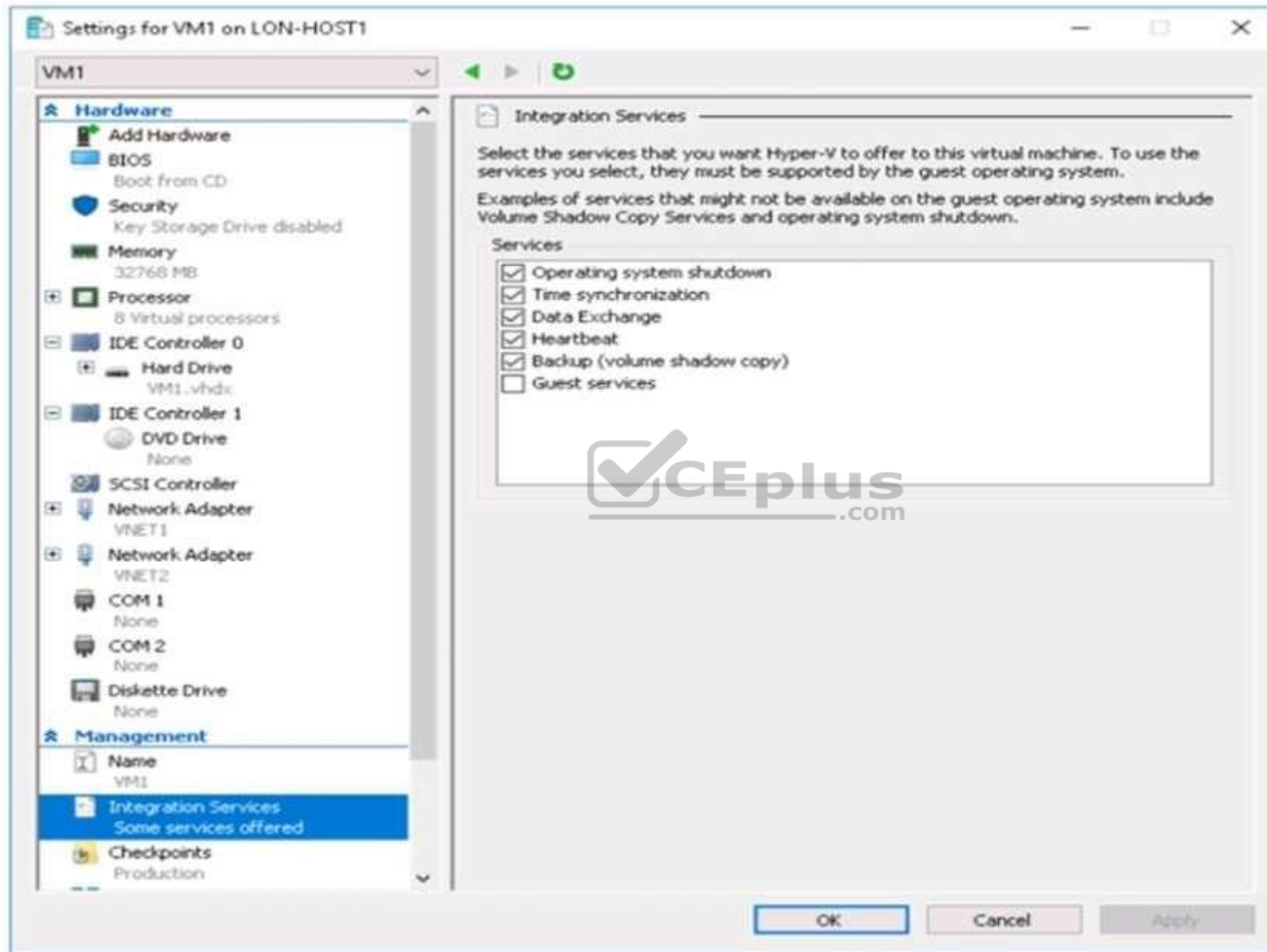
### QUESTION 10

You have an Azure subscription.

You have an on-premises virtual machine named VM1. The settings for VM1 are shown in the exhibit. (Click the **Exhibit** tab.)

<https://vceplus.com/>





<https://vceplus.com/>

You need to ensure that you can use the disks attached to VM1 as a template for Azure virtual machines.

What should you modify on VM1?

- A. the hard drive
- B. the processor
- C. the network adapters
- D. the memory
- E. Integration Services

**Correct Answer:** A

**Section:** [none]

**Explanation**

**Explanation/Reference:**

Explanation:

From the exhibit we see that the disk is in the VHDX format.

Before you upload a Windows virtual machines (VM) from on-premises to Microsoft Azure, you must prepare the virtual hard disk (VHD or VHDX). Azure supports only generation 1 VMs that are in the VHD file format and have a fixed sized disk. The maximum size allowed for the VHD is 1,023 GB. You can convert a generation 1 VM from the VHDX file system to VHD and from a dynamically expanding disk to fixed-sized.

Reference: <https://docs.microsoft.com/en-us/azure/virtual-machines/windows/prepare-for-upload-vhd-image?toc=%2fazure%2fvirtual-machines%2fwindows%2ftoc.json> **Testlet 2**

Case study

This is a case study. **Case studies are not timed separately. You can use as much exam time as you would like to complete each case.** However, there may be additional case studies and sections on this exam. You must manage your time to ensure that you are able to complete all questions included on this exam in the time provided.

To answer the questions included in a case study, you will need to reference information that is provided in the case study. Case studies might contain exhibits and other resources that provide more information about the scenario that is described in the case study. Each question is independent of the other questions in this case study.

At the end of this case study, a review screen will appear. This screen allows you to review your answers and to make changes before you move to the next section of the exam. After you begin a new section, you cannot return to this section.

**To start the case study**

<https://vceplus.com/>

To display the first question in this case study, click the **Next** button. Use the buttons in the left pane to explore the content of the case study before you answer the questions. Clicking these buttons displays information such as business requirements, existing environment, and problem statements. If the case study has an **All Information** tab, note that the information displayed is identical to the information displayed on the subsequent tabs. When you are ready to answer a question, click the **Question** button to return to the question. **Overview**

Humongous Insurance is an insurance company that has three offices in Miami, Tokyo and Bangkok. Each office has 5,000 users.

### **Existing Environment**

#### **Active Directory Environment**

Humongous Insurance has a single-domain Active Directory forest named humongousinsurance.com. The functional level of the forest is Windows Server 2012.

You recently provisioned an Azure Active Directory (Azure AD) tenant.

#### **Network Infrastructure**

Each office has a local data center that contains all the servers for that office. Each office has a dedicated connection to the Internet.

Each office has several link load balancers that provide access to the servers.

#### **Active Directory Issue**

Several users in humongousinsurance.com have UPNs that contain special characters.

You suspect that some of the characters are unsupported in Azure AD.

#### **Licensing Issue**

You attempt to assign a license in Azure to several users and receive the following error message: "Licenses not assigned. License assignment failed for one user." You verify that the Azure subscription has the available licenses.

### **Requirements**

#### **Planned Changes**

Humongous Insurance plans to open a new office in Paris. The Paris office will contain 1,000 users who will be hired during the next 12 months. All the resources used by the Paris office users will be hosted in Azure.

#### **Planned Azure AD Infrastructure**

The on-premises Active Directory domain will be synchronized to Azure AD.

All client computers in the Paris office will be joined to an Azure AD domain.

#### **Planned Azure Networking Infrastructure**

You plan to create the following networking resources in a resource group named All\_Resources:

<https://vceplus.com/>

- Default Azure system routes that will be the only routes used to route traffic
- A virtual network named Paris-VNet that will contain two subnets named Subnet1 and Subnet2
- A virtual network named ClientResources-VNet that will contain one subnet named ClientSubnet
- A virtual network named AllOffices-VNet that will contain two subnets named Subnet3 and Subnet4

You plan to enable peering between Paris-VNet and AllOffices-VNet. You will enable the **Use remote gateways** setting for the Paris-VNet peerings.

You plan to create a private DNS zone named humongousinsurance.local and set the registration network to the ClientResources-VNet virtual network.

### Planned Azure Computer Infrastructure

Each subnet will contain several virtual machines that will run either Windows Server 2012 R2, Windows Server 2016, or Red Hat Linux.

### Department Requirements

Humongous Insurance identifies the following requirements for the company's departments:

- Web administrators will deploy Azure web apps for the marketing department. Each web app will be added to a separate resource group. The initial configuration of the web apps will be identical. The web administrators have permission to deploy web apps to resource groups.
- During the testing phase, auditors in the finance department must be able to review all Azure costs from the past week.

### Authentication Requirements

Users in the Miami office must use Azure Active Directory Seamless Single Sign-on (Azure AD Seamless SSO) when accessing resources in Azure.

### QUESTION 1

You need to resolve the Active Directory issue.

What should you do?

- A. Run the IdFix tool then use the Update actions.
- B. From Active Directory Domains and Trusts, modify the list of UPN suffixes.
- C. From Azure AD Connect, modify the outbound synchronization rule.
- D. From Active Directory Users and Computers, select the user accounts and then modify the UPN suffix value.

**Correct Answer:** A

**Section:** [none]

**Explanation**

### Explanation/Reference:

Explanation:

IdFix is used to perform discovery and remediation of identity objects and their attributes in an on-premises Active Directory environment in preparation for migration to Azure Active Directory. IdFix is intended for the Active Directory administrators responsible for directory synchronization with Azure Active Directory.

<https://vceplus.com/>

Scenario: Active Directory Issue

Several users in humongousinsurance.com have UPNs that contain special characters.  
You suspect that some of the characters are unsupported in Azure AD.

References: <https://www.microsoft.com/en-us/download/details.aspx?id=36832>

## QUESTION 2

You need to define a custom domain name for Azure AD to support the planned infrastructure.

Which domain name should you use?

- A. ad.humongousinsurance.com
- B. humingousinsurance.onmicrosoft.com
- C. humongousinsurance.com
- D. humongousinsurance.local

**Correct Answer:** C

**Section:** [none]

**Explanation**



**Explanation/Reference:**

Explanation:

Every Azure AD directory comes with an initial domain name in the form of domainname.onmicrosoft.com. The initial domain name cannot be changed or deleted, but you can add your corporate domain name to Azure AD as well. For example, your organization probably has other domain names used to do business and users who sign in using your corporate domain name. Adding custom domain names to Azure AD allows you to assign user names in the directory that are familiar to your users, such as 'alice@contoso.com.' instead of 'alice@domain name.onmicrosoft.com'.

Scenario:

Network Infrastructure: Each office has a local data center that contains all the servers for that office. Each office has a dedicated connection to the Internet.

Humongous Insurance has a single-domain Active Directory forest named humongousinsurance.com

Planned Azure AD Infrastructure: The on-premises Active Directory domain will be synchronized to Azure

AD.

References: <https://docs.microsoft.com/en-us/azure/active-directory/fundamentals/add-custom-domain>

<https://vceplus.com/>

## Question Set 1

### QUESTION 1

You have an Azure subscription that contains the resources in the following table.

Name	Type
RG1	Resource group
Store1	Azure Storage account
Sync1	Azure File Sync

Store1 contains a file share named Data. Data contains 5,000 files.

You need to synchronize the files in Data to an on-premises server named Server1.

Which three actions should you perform? Each correct answer presents part of the solution.

**NOTE:** Each correct selection is worth one point.

- A. Download an automation script.
- B. Register Server1.
- C. Create a sync group.
- D. Create a container instance.
- E. Install the Azure File Sync agent on Server1.



**Correct Answer:** BCE

**Section:** [none]

**Explanation**

**Explanation/Reference:**

Explanation:

Step 1 (E): Install the Azure File Sync agent on Server1

The Azure File Sync agent is a downloadable package that enables Windows Server to be synced with an Azure file share

Step 2 (B): Register Server1.

Register Windows Server with Storage Sync Service

Registering your Windows Server with a Storage Sync Service establishes a trust relationship between your server (or cluster) and the Storage Sync Service.

Step 3 (C): Create a sync group and a cloud endpoint.

<https://vceplus.com/>



A sync group defines the sync topology for a set of files. Endpoints within a sync group are kept in sync with each other. A sync group must contain one cloud endpoint, which represents an Azure file share and one or more server endpoints. A server endpoint represents a path on registered server.

References: <https://docs.microsoft.com/en-us/azure/storage/files/storage-sync-files-deployment-guide>

## QUESTION 2

You have the Azure virtual machines shown in the following table.

Name	Azure Region
VM1	West Europe
VM2	West Europe
VM3	North Europe
VM4	North Europe

You have a Recovery Services vault that protects VM1 and VM2.

You need to protect VM3 and VM4 by using Recovery Services.

What should you do first?

- A. Create a new backup policy.
- B. Configure the extensions for VM3 and VM4.
- C. Create a storage account.
- D. Create a new Recovery Services vault.



**Correct Answer:** D

**Section:** [none]

**Explanation**

**Explanation/Reference:**

Explanation:

A Recovery Services vault is a storage entity in Azure that houses data. The data is typically copies of data, or configuration information for virtual machines (VMs), workloads, servers, or workstations. You can use Recovery Services vaults to hold backup data for various Azure services

References: <https://docs.microsoft.com/en-us/azure/site-recovery/azure-to-azure-tutorial-enable-replication>

## QUESTION 3

<https://vceplus.com/>

HOTSPOT

Home > Storage accounts

## Storage accounts




Contoso

+ Add   Edit columns   Refresh   Assign Tags   Delete

Subscriptions: All 2 selected – Don't see a subscription? [Switch directories](#)

Filter by name...   All subscriptions   All resource groups   All types   All locations   No grouping

3 items

<input type="checkbox"/>	NAME ↑	TYPE ↑	KIND ↑	RESOURCE ... ↑	LOCATION ↑	SUBSCRIPTI... ↑	ACCESS T...
<input type="checkbox"/>	 storageaccount1	Storage account	Storage	ContosoRG1	East US	Subscription 1	-
<input type="checkbox"/>	 storageaccount2	Storage account	StorageV2	ContosoRG1	Central US	Subscription 1	Hot
<input type="checkbox"/>	 storageaccount3	Storage account	BlobStorage	ContosoRG1	East US	Subscription 1	Hot

You have Azure Storage accounts as shown in the following exhibit.

Use the drop-down menus to select the answer choice that completes each statement based on the information presented in the graphic.

**NOTE:** Each correct selection is worth one point.

<https://vceplus.com/>

Hot Area:

### Answer Area

You can use [answer choice] for Azure Table Storage.

	▼
storageaccount1 only	
storageaccount2 only	
storageaccount3 only	
storageaccount1 and storageaccount2 only	
storageaccount2 and storageaccount3 only	

You can use [answer choice] for Azure Blob storage.

	▼
storageaccount3 only	
storageaccount2 and storageaccount3 only	
storageaccount1 and storageaccount3 only	
all the storage accounts	



Correct Answer:

## Answer Area

You can use [answer choice] for Azure Table Storage.

▼
storageaccount1 only
storageaccount2 only
storageaccount3 only
storageaccount1 and storageaccount2 only
storageaccount2 and storageaccount3 only

You can use [answer choice] for Azure Blob storage.

▼
storageaccount3 only
storageaccount2 and storageaccount3 only
storageaccount1 and storageaccount3 only
all the storage accounts



Section: [none]

Explanation

Explanation/Reference:

Explanation:

Box 1: storageaccount1 and storageaccount2 only

Box 2: All the storage accounts

Note: The three different storage account options are: General-purpose v2 (GPv2) accounts, General-purpose v1 (GPv1) accounts, and Blob storage accounts.

- General-purpose v2 (GPv2) accounts are storage accounts that support all of the latest features for blobs, files, queues, and tables.
- Blob storage accounts support all the same block blob features as GPv2, but are limited to supporting only block blobs.
- General-purpose v1 (GPv1) accounts provide access to all Azure Storage services, but may not have the latest features or the lowest per gigabyte pricing.

References: <https://docs.microsoft.com/en-us/azure/storage/common/storage-account-options>

**QUESTION 4**

SIMULATION

<https://vceplus.com/>

Please wait while the virtual machine loads. Once loaded, you may proceed to the lab section. This may take a few minutes, and the wait time will not be deducted from your overall test time.

When the Next button is available, click it to access the lab section. In this section, you will perform a set of tasks in a live environment. While most functionality will be available to you as it would be in a live environment, some functionality (e.g. copy and paste, ability to navigate to external websites) will not be possible by design.

Scoring is based on the outcome of performing the tasks stated in the lab. In other words, it doesn't matter how you accomplish the task, if you successfully perform it, you will earn credit for that task.

Labs are not timed separately, and this exam may have more than one lab that you must complete. You can use as much time as you would like to complete each lab. But, you should manage your time appropriately to ensure that you are able to complete the lab(s) and all other sections of the exam in the time provided.

Please note that once you submit your work by clicking the Next button within a lab, you will NOT be able to return to the lab.

You may now click next to proceed to the lab.

Use the following login credentials as needed:

**Azure Username:** XXXXXXXX

**Azure Password:** XXXXXXXX

The following information is for technical support purposes only:

**Lab Instance:** 9172796





### Task 1

You plan to prevent users from accidentally deleting blob data from Azure.

You need to ensure that administrators can recover any blob data that is deleted accidentally from the storagelod9272261 storage account for 14 days after the deletion occurred.

What should you do from the Azure portal?

**Correct Answer:** See solution below.

**Section:** [none]

**Explanation**

**Explanation/Reference:**

Explanation:

<https://vceplus.com/>

Task A: Create a Recovery Services vault (if a vault already exists skip this task, go to Task B below)

A1. From Azure Portal, On the Hub menu, click All services and in the list of resources, type Recovery Services and click Recovery Services vaults.



If there are recovery services vaults in the subscription, the vaults are listed.

A2. On the Recovery Services vaults menu, click Add.



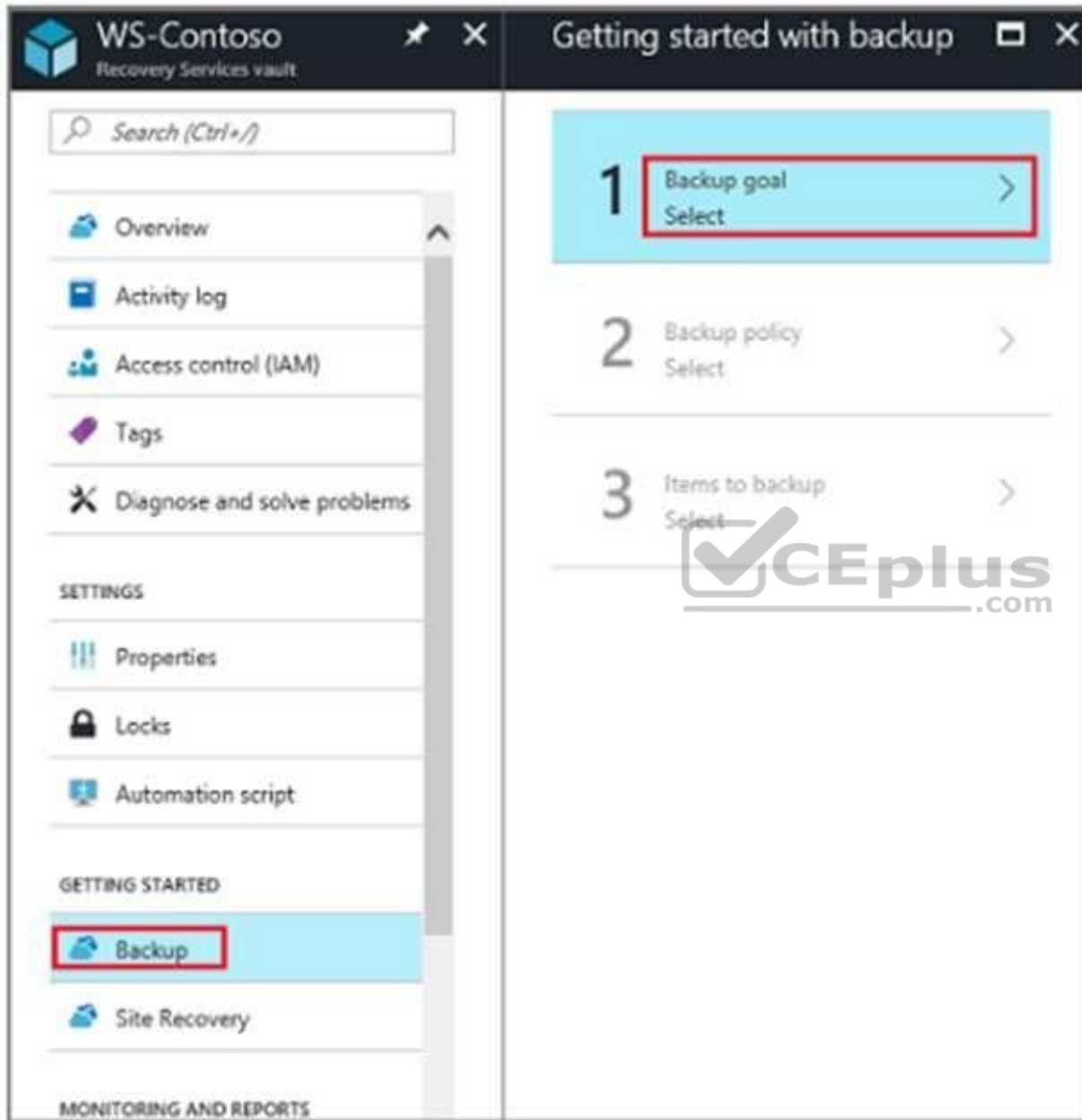
A3. The Recovery Services vault blade opens, prompting you to provide a Name, Subscription, Resource group, and Location

Task B. Create a backup goal

B1. On the Recovery Services vault blade (for the vault you just created), in the Getting Started section, click Backup, then on the Getting Started with Backup blade, select Backup goal.







WS-Contoso  
Recovery Services vault

Getting started with backup

Search (Ctrl+F)

- Overview
- Activity log
- Access control (IAM)
- Tags
- Diagnose and solve problems

SETTINGS

- Properties
- Locks
- Automation script

GETTING STARTED

- Backup**
- Site Recovery

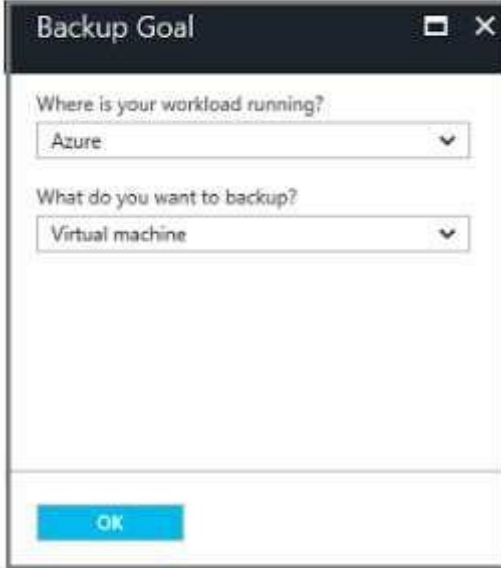
MONITORING AND REPORTS

- 1 Backup goal**  
Select
- 2 Backup policy  
Select
- 3 Items to backup  
Select

<https://vceplus.com/>

The Backup Goal blade opens. If the Recovery Services vault has been previously configured, then the Backup Goal blades opens when you click Backup on the Recovery Services vault blade.

B2. From the Where is your workload running? drop-down menu, select Azure.

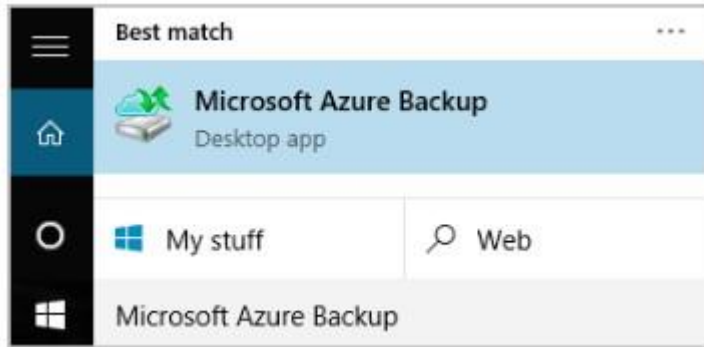


B3. From the What do you want to backup? menu, select Blob Storage, and click OK.

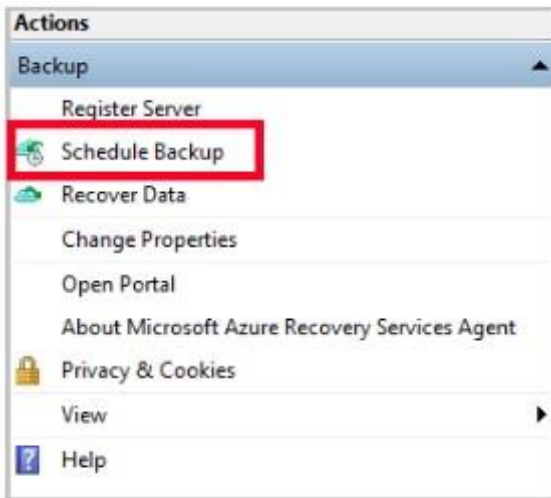
B4. Finish the Wizard.

Task C. create a backup schedule

C1. Open the Microsoft Azure Backup agent. You can find it by searching your machine for Microsoft Azure Backup.



C2. In the Backup agent's Actions pane, click Schedule Backup to launch the Schedule Backup Wizard.



C3. On the Getting started page of the Schedule Backup Wizard, click Next.

C4. On the Select Items to Backup page, click Add Items.

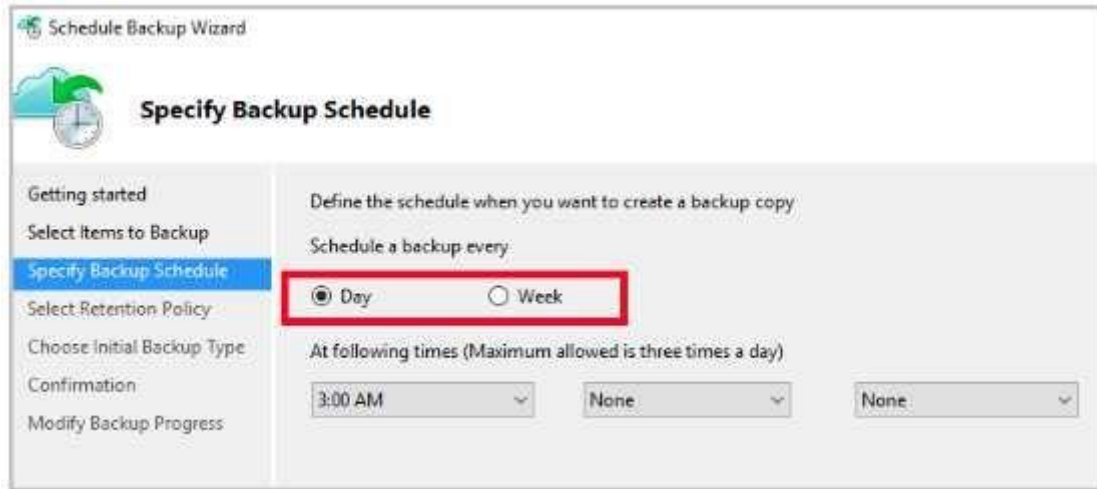
The Select Items dialog opens.

C5. Select Blob Storage you want to protect, and then click OK.

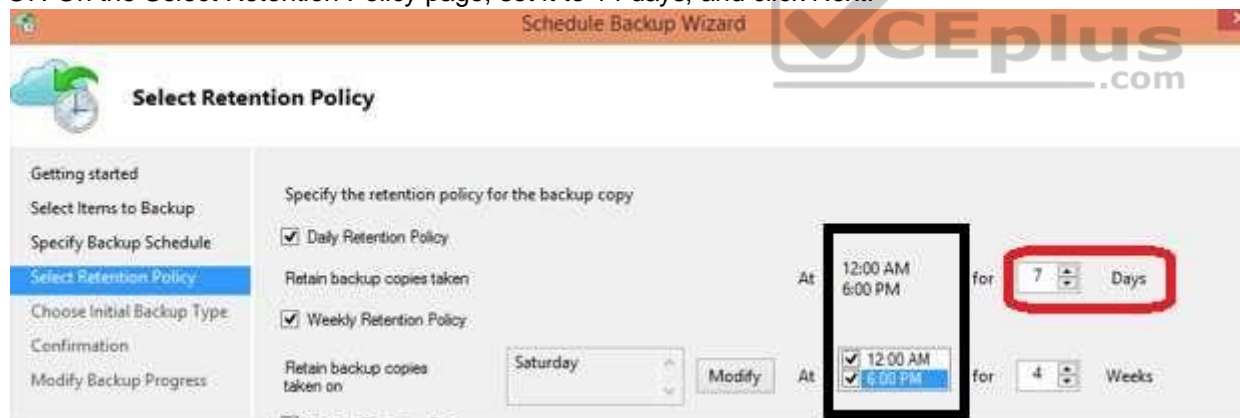
C6. In the Select Items to Backup page, click Next.

<https://vceplus.com/>

On the Specify Backup Schedule page, specify Schedule a backup every day, and click Next.



C7. On the Select Retention Policy page, set it to 14 days, and click Next.



C8. Finish the Wizard.

References: <https://docs.microsoft.com/en-us/azure/backup/backup-configure-vault> **QUESTION 5**

You plan to use the Azure Import/Export service to copy files to a storage account.

Which two files should you create before you prepare the drives for the import job? Each correct answer presents part of the solution.

<https://vceplus.com/>

**NOTE:** Each correct selection is worth one point.

- A. a driveset CSV file
- B. a JSON configuration file
- C. a PowerShell PS1 file
- D. an XML manifest file
- E. a dataset CSV file

**Correct Answer:** AE

**Section:** [none]

**Explanation**

**Explanation/Reference:**

Explanation:

A: Modify the driveset.csv file in the root folder where the tool resides.

E: Modify the dataset.csv file in the root folder where the tool resides. Depending on whether you want to import a file or folder or both, add entries in the dataset.csv file

References: <https://docs.microsoft.com/en-us/azure/storage/common/storage-import-export-data-to-files>

### QUESTION 6

You create an Azure Storage account named contosostorage.

You plan to create a file share named data.

Users need to map a drive to the data file share from home computers that run Windows 10.

Which outbound port should you open between the home computers and the data file share?

- A. 80
- B. 443
- C. 445
- D. 3389

**Correct Answer:** C

**Section:** [none]

**Explanation**

<https://vceplus.com/>

**Explanation/Reference:**

Explanation:

Ensure port 445 is open: The SMB protocol requires TCP port 445 to be open; connections will fail if port 445 is blocked.

References: <https://docs.microsoft.com/en-us/azure/storage/files/storage-how-to-use-files-windows>

**QUESTION 7**

You have two Azure virtual machines named VM1 and VM2. You have two Recovery Services vaults named RSV1 and RSV2.

VM2 is protected by RSV1.

You need to use RSV2 to protect VM2.

What should you do first?

- A. From the VM2 blade, click **Disaster recovery**, click **Replication settings**, and then select RSV2 as the Recovery Services vault.
- B. From the RSV2 blade, click **Backup**. From the Backup blade, select the backup for the virtual machine, and then click **Backup**.
- C. From the RSV1 blade, click **Backup Jobs** and export the VM2 job.
- D. From the RSV1 blade, click **Backup items** and stop the VM2 backup.

**Correct Answer:** A

**Section:** [none]

**Explanation**

**Explanation/Reference:**

Reference: <https://docs.microsoft.com/en-us/azure/backup/backup-azure-vms-first-look-arm>

**QUESTION 8**

You have a Recovery Service vault that you use to test backups. The test backups contain two protected virtual machines.

You need to delete the Recovery Services vault.

What should you do first?

- A. From the Recovery Service vault, delete the backup data.
- B. Modify the disaster recovery properties of each virtual machine.
- C. From the Recovery Service vault, stop the backup of each backup item.
- D. Modify the locks of each virtual machine.

<https://vceplus.com/>

**Correct Answer: C**

**Section: [none]**

**Explanation**

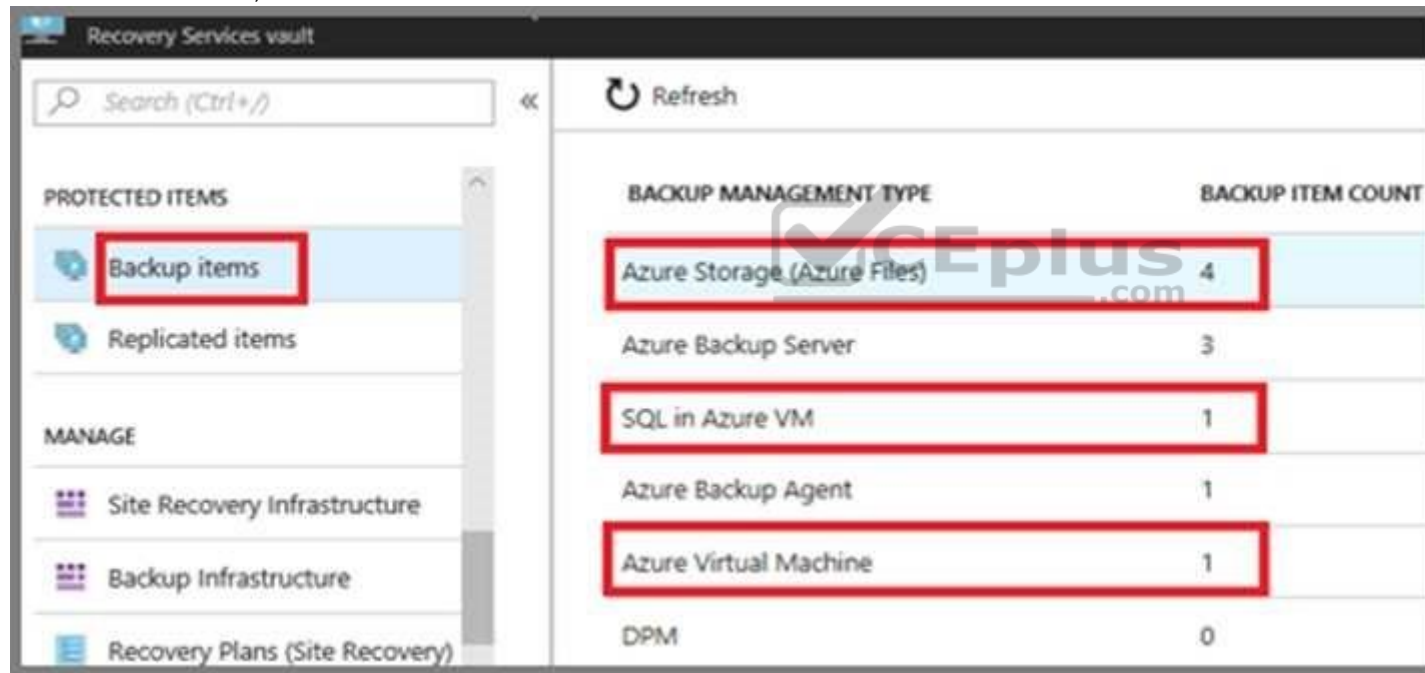
**Explanation/Reference:**

Explanation:

You can't delete a Recovery Services vault if it is registered to a server and holds backup data. If you try to delete a vault, but can't, the vault is still configured to receive backup data.

Remove vault dependencies and delete vault

In the vault dashboard menu, scroll down to the Protected Items section, and click Backup Items. In this menu, you can stop and delete Azure File Servers, SQL Servers in Azure VM, and Azure virtual machines.



BACKUP MANAGEMENT TYPE	BACKUP ITEM COUNT
Azure Storage (Azure Files)	4
Azure Backup Server	3
SQL in Azure VM	1
Azure Backup Agent	1
Azure Virtual Machine	1
DPM	0

Reference:

<https://docs.microsoft.com/en-us/azure/backup/backup-azure-delete-vault>

## Question Set 1

### QUESTION 1

You have an Azure subscription named Subscription1 that is used by several departments at your company. Subscription1 contains the resources in the following table.

Name	Type
storage1	Storage account
RG1	Resource group
Container1	Blob container
Share1	File share

Another administrator deploys a virtual machine named VM1 and an Azure Storage account named Storage2 by using a single Azure Resource Manager template.

You need to view the template used for the deployment.

From which blade can you view the template that was used for the deployment?

- A. Container1
- B. RG1
- C. VM1
- D. Storage2



**Correct Answer:** B

**Section:** [none]

**Explanation**

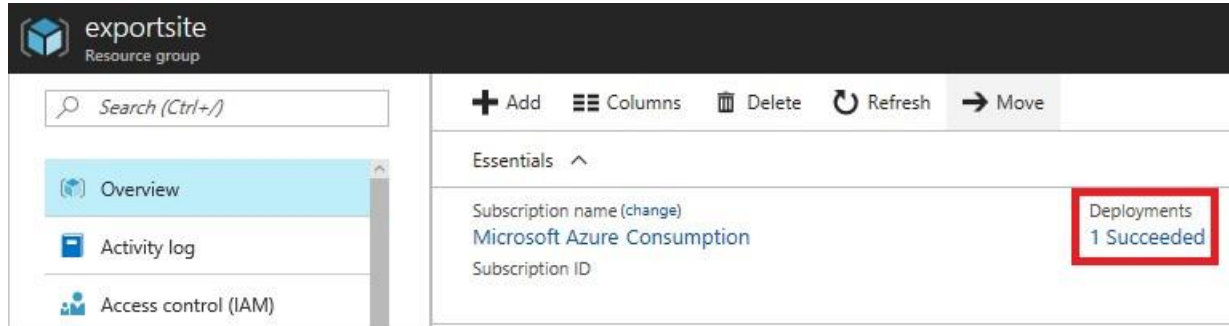
**Explanation/Reference:**

Explanation:

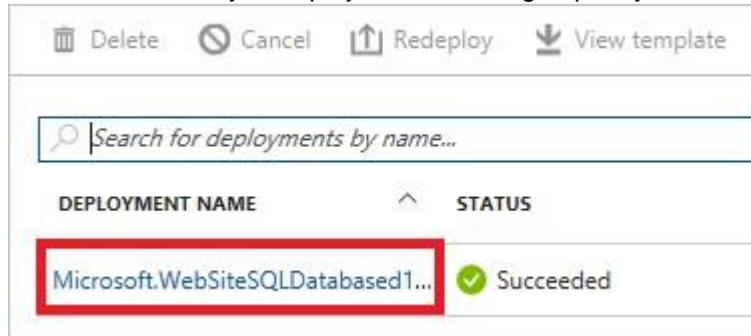
View template from deployment history

1. Go to the resource group for your new resource group. Notice that the portal shows the result of the last deployment. Select this link.

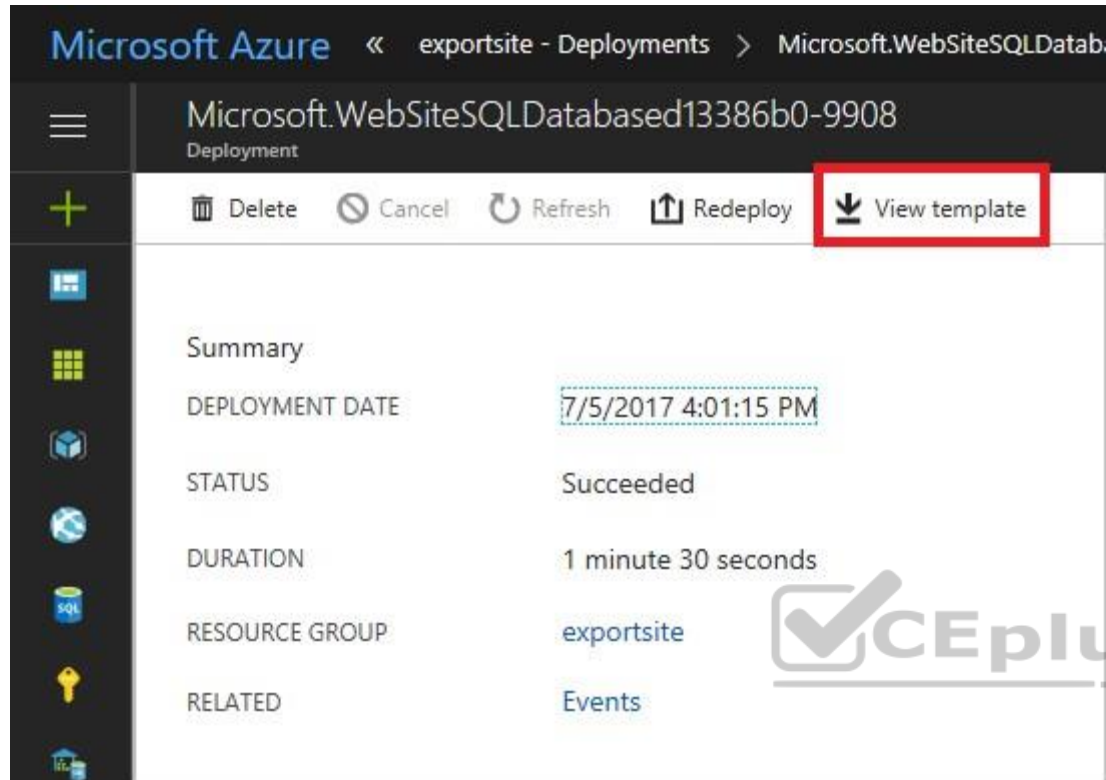




2. You see a history of deployments for the group. In your case, the portal probably lists only one deployment. Select this deployment.



3. The portal displays a summary of the deployment. The summary includes the status of the deployment and its operations and the values that you provided for parameters. To see the template that you used for the deployment, select View template.



References: <https://docs.microsoft.com/en-us/azure/azure-resource-manager/resource-manager-export-template>

## QUESTION 2

**Note:** This question is part of a series of questions that present the same scenario. Each question in the series contains a unique solution that might meet the stated goals. Some question sets might have more than one correct solution, while others might not have a correct solution.

**After you answer a question in this section, you will NOT be able to return to it. As a result, these questions will not appear in the review screen.**

You have an Azure virtual machine named VM1. VM1 was deployed by using a custom Azure Resource Manager template named ARM1.json.

You receive a notification that VM1 will be affected by maintenance.

You need to move VM1 to a different host immediately.

<https://vceplus.com/>

Solution: From the Overview blade, you move the virtual machine to a different subscription.

Does this meet the goal?

- A. Yes
- B. No

**Correct Answer:** B

**Section:** [none]

**Explanation**

**Explanation/Reference:**

Explanation:

You would need to redeploy the VM.

References: <https://docs.microsoft.com/en-us/azure/virtual-machines/windows/redeploy-to-new-node>

### QUESTION 3

**Note:** This question is part of a series of questions that present the same scenario. Each question in the series contains a unique solution that might meet the stated goals. Some question sets might have more than one correct solution, while others might not have a correct solution.

**After you answer a question in this section, you will NOT be able to return to it. As a result, these questions will not appear in the review screen.**

You have an Azure virtual machine named VM1. VM1 was deployed by using a custom Azure Resource Manager template named ARM1.json.

You receive a notification that VM1 will be affected by maintenance.

You need to move VM1 to a different host immediately.

Solution: From the Redeploy blade, you click **Redeploy**.



<https://vceplus.com/>

<https://vceplus.com/>

Does this meet the goal?

- A. Yes
- B. No

**Correct Answer:** A

**Section:** [none]

**Explanation**

**Explanation/Reference:**

Explanation:

When you redeploy a VM, it moves the VM to a new node within the Azure infrastructure and then powers it back on, retaining all your configuration options and associated resources.

References: <https://docs.microsoft.com/en-us/azure/virtual-machines/windows/redeploy-to-new-node>

#### **QUESTION 4**

##### **HOTSPOT**



You have an Azure subscription named Subscription1. Subscription1 contains two Azure virtual machines named VM1 and VM2. VM1 and VM2 run Windows Server 2016.

VM1 is backed up daily by Azure Backup without using the Azure Backup agent.

VM1 is affected by ransomware that encrypts data.

You need to restore the latest backup of VM1.

To which location can you restore the backup? To answer, select the appropriate options in the answer area.

**NOTE:** Each correct selection is worth one point.

**Hot Area:**

<https://vceplus.com/>

## Answer Area

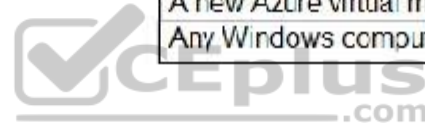
You can perform a file recovery of VM1 to:

▼
VM1 only
VM2 only
VM1 and VM2 only
A new Azure virtual machine only
Any Windows computer that has Internet connectivity

You can restore VM1 to:

▼
VM1 only
VM2 only
VM1 and VM2 only
A new Azure virtual machine only
Any Windows computer that has Internet connectivity

Correct Answer:



## Answer Area

You can perform a file recovery of VM1 to:

VM1 only
VM2 only
VM1 and VM2 only
A new Azure virtual machine only
Any Windows computer that has Internet connectivity

You can restore VM1 to:

VM1 only
VM2 only
VM1 and VM2 only
A new Azure virtual machine only
Any Windows computer that has Internet connectivity

Section: [none]

Explanation

Explanation/Reference:

### QUESTION 5

You download an Azure Resource Manager template based on an existing virtual machine. The template will be used to deploy 100 virtual machines.

You need to modify the template to reference an administrative password. You must prevent the password from being stored in plain text.

What should you create to store the password?

- A. an Azure Key Vault and an access policy
- B. a Recovery Services vault and a backup policy
- C. Azure Active Directory (AD) Identity Protection and an Azure policy
- D. an Azure Storage account and an access policy

**Correct Answer:** A

<https://vceplus.com/>

**Section: [none]**

**Explanation**

**Explanation/Reference:**

Explanation:

You can use a template that allows you to deploy a simple Windows VM by retrieving the password that is stored in a Key Vault. Therefore, the password is never put in plain text in the template parameter file.

References: <https://azure.microsoft.com/en-us/resources/templates/101-vm-secure-password/>

## **QUESTION 6**

### **SIMULATION**

Please wait while the virtual machine loads. Once loaded, you may proceed to the lab section. This may take a few minutes, and the wait time will not be deducted from your overall test time.

When the Next button is available, click it to access the lab section. In this section, you will perform a set of tasks in a live environment. While most functionality will be available to you as it would be in a live environment, some functionality (e.g. copy and paste, ability to navigate to external websites) will not be possible by design.

Scoring is based on the outcome of performing the tasks stated in the lab. In other words, it doesn't matter how you accomplish the task, if you successfully perform it, you will earn credit for that task.

Labs are not timed separately, and this exam may have more than one lab that you must complete. You can use as much time as you would like to complete each lab. But, you should manage your time appropriately to ensure that you are able to complete the lab(s) and all other sections of the exam in the time provided.

Please note that once you submit your work by clicking the Next button within a lab, you will NOT be able to return to the lab.

You may now click next to proceed to the lab.

Use the following login credentials as needed:

**Azure Username:** XXXXXXXX

**Azure Password:** XXXXXXXX

The following information is for technical support purposes only:

**Lab Instance:** 9172796

<https://vceplus.com/>



#### Task5

You plan to connect several virtual machines to the VNET01-USEA2 virtual network.

In the Web-RG1od9272261 resource group, you need to create a virtual machine that uses the Standard\_B2ms size named Web01 that runs Windows Server 2016.

Web01 must be added to an availability set.

What should you do from the Azure portal?

**Correct Answer:** See solution below.

**Section:** [none]

**Explanation**

**Explanation/Reference:**

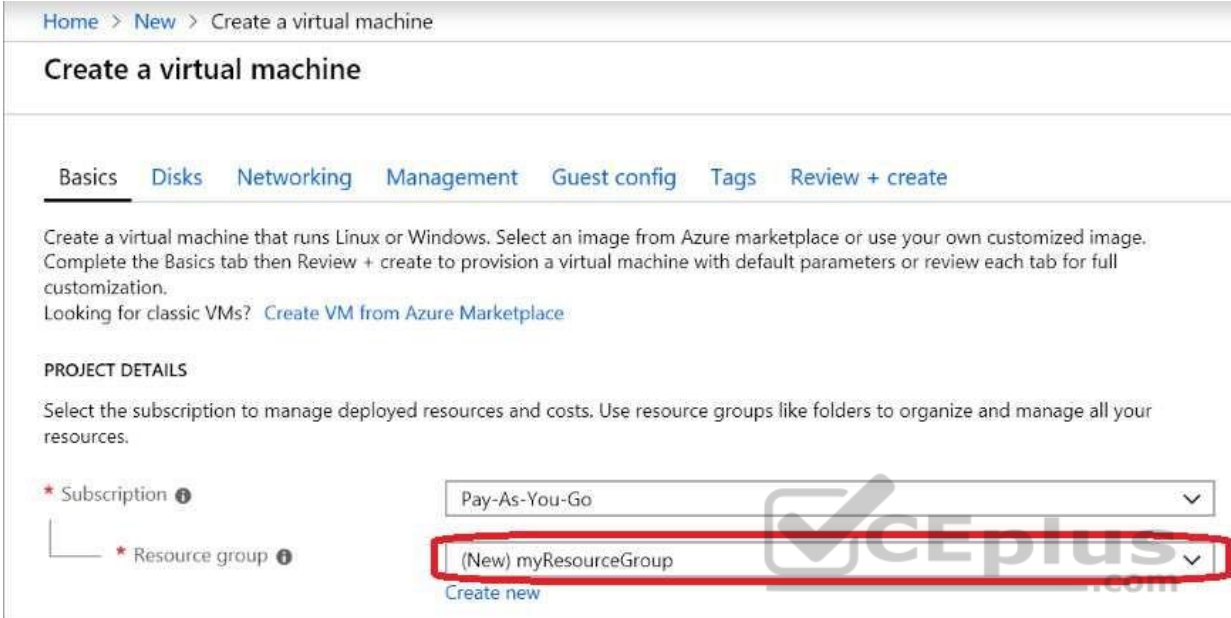
Explanation:

<https://vceplus.com/>



Step 1: Choose Create a resource in the upper left-hand corner of the Azure portal.

Step 2: In the Basics tab, under Project details, make sure the correct subscription is selected and then choose Web-RG1od9272261 resource group



Home > New > Create a virtual machine

## Create a virtual machine

Basics | Disks | Networking | Management | Guest config | Tags | Review + create

Create a virtual machine that runs Linux or Windows. Select an image from Azure marketplace or use your own customized image. Complete the Basics tab then Review + create to provision a virtual machine with default parameters or review each tab for full customization.  
Looking for classic VMs? [Create VM from Azure Marketplace](#)

**PROJECT DETAILS**

Select the subscription to manage deployed resources and costs. Use resource groups like folders to organize and manage all your resources.

\* Subscription ⓘ

\* Resource group ⓘ  [Create new](#)

Step 3: Under Instance details type/select:

Virtual machine name: Web01

Image: Windows Server 2016

Size: Standard\_B2ms size

Leave the other defaults.

**INSTANCE DETAILS**

\* Virtual machine name ⓘ

\* Region ⓘ

Availability options

\* Image ⓘ   
[Browse all images and disks](#)

\* Size ⓘ **Standard DS1 v2**  
1 vcpu, 3.5 GB memory  
[Change size](#)

Step 4: Finish the Wizard

### QUESTION 7

You plan to automate the deployment of a virtual machine scale set that uses the Windows Server 2016 Datacenter image.

You need to ensure that when the scale set virtual machines are provisioned, they have web server components installed.

Which two actions should you perform? Each correct answer presents part of the solution.

**NOTE:** Each correct selection is worth one point.

- A. Modify the `extensionProfile` section of the Azure Resource Manager template.
- B. Create an automation account.
- C. Upload a configuration script.
- D. Create a new virtual machine scale set in the Azure portal.
- E. Create an Azure policy.

**Correct Answer:** AD

**Section:** [none]

**Explanation**

**Explanation/Reference:**

Explanation:

<https://vceplus.com/>

Virtual Machine Scale Sets can be used with the Azure Desired State Configuration (DSC) extension handler. Virtual machine scale sets provide a way to deploy and manage large numbers of virtual machines, and can elastically scale in and out in response to load. DSC is used to configure the VMs as they come online so they are running the production software.

References: <https://docs.microsoft.com/en-us/azure/virtual-machine-scale-sets/virtual-machine-scale-sets-dsc>

## **QUESTION 8**

### **SIMULATION**

Please wait while the virtual machine loads. Once loaded, you may proceed to the lab section. This may take a few minutes, and the wait time will not be deducted from your overall test time.

When the Next button is available, click it to access the lab section. In this section, you will perform a set of tasks in a live environment. While most functionality will be available to you as it would be in a live environment, some functionality (e.g, copy and paste, ability to navigate to external websites) will not be possible by design.

Scoring is based on the outcome of performing the tasks stated in the lab. In other words, it doesn't matter how you accomplish the task, if you successfully perform it, you will earn credit for that task.

Labs are not timed separately, and this exam may have more than one lab that you must complete. You can use as much time as you would like to complete each lab. But, you should manage your time appropriately to ensure that you are able to complete the lab(s) and all other sections of the exam in the time provided.

Please note that once you submit your work by clicking the Next button within a lab, you will NOT be able to return to the lab.

You may now click next to proceed to the lab.



<https://vceplus.com/>

Microsoft Azure

Search resources, services, and docs

### Azure services

See all (100+) > Create a resource >

- Virtual machines
- App Services
- Storage accounts
- SQL databases
- Azure Database for PostgreSQL servers
- Azure Cosmos DB
- Kubernetes services
- Fun...

**Microsoft Learn**  
Learn Azure with free online training from Microsoft

**Azure Monitor**  
Monitor your apps and infrastructure

**Security Center**  
Secure your apps and infrastructure

**Cost Management**  
Analyze and optimize cloud spend for free

### Recent resources

See all your recent resources > See all your resources >

**No recent resources to display**  
As you visit resources, they'll be listed in Recently used resources for quick and easy access.

[Create a resource](#)

#### Task 4

You need to deploy an Azure virtual machine named VM1004a based on an Ubuntu Server image, and then configure VM1004a to meet the following requirements:

- The virtual machine must contain data disks that can store at least 15 TB of data.
- The data disks must be able to provide at least 2,000 IOPS.
- Storage costs must be minimized.

What should you do from the Azure portal?

**Correct Answer:** See solution below.

**Section:** [none]

**Explanation**

**Explanation/Reference:**

Explanation:

Step 1: Open the Azure portal.

Step 2: On the left menu, select All resources. You can sort the resources by Type to easily find your images.

Step 3: Select the image you want to use from the list. The image Overview page opens.

Step 4: Select Create VM from the menu.

Step 5: Enter the virtual machine information.

Select VM1004a as the name for the first Virtual machine.

The user name and password entered here will be used to log in to the virtual machine. When complete, select OK. You can create the new VM in an existing resource group, or choose Create new to create a new resource group to store the VM.

Step 6: Select a size for the VM. To see more sizes, select View all or change the Supported disk type filter.

To meet the requirements select Standard SSD E70.

Standard SSD E70: Up to 16 TB, IOPS up to 4000, \$1,228.80/month

Standard SSD Managed Disks, a low-cost SSD offering, are optimized for test and entry-level production workloads requiring consistent latency.

Step 7: Under Settings, make changes as necessary and select OK.

Step 8: On the summary page, you should see your image name listed as a Private image. Select Ok to start the virtual machine deployment.

Reference:

<https://vceplus.com/>

<https://docs.microsoft.com/en-us/azure/virtual-machines/windows/create-vm-generalized-managed>

### QUESTION 9

You have an Azure subscription that contains a virtual machine named VM1. VM1 hosts a line-of-business application that is available 24 hours a day. VM1 has one network interface and one managed disk. VM1 uses the D4s v3 size.

You plan to make the following changes to VM1:

- Change the size to D8s v3.
- Add a 500-GB managed disk.
- Add the Puppet Agent extension.
- Attach an additional network interface.

Which change will cause downtime for VM1?

- A. Add the Puppet Agent extension.
- B. Change the size to D8s v3.
- C. Add a 500-GB managed disk.
- D. Attach an additional network interface.

**Correct Answer:** B

**Section:** [none]

**Explanation**

**Explanation/Reference:**

Explanation:

While resizing the VM it must be in a stopped state.

References: <https://azure.microsoft.com/en-us/blog/resize-virtual-machines/>

### QUESTION 10

You have an Azure virtual machine named VM1 that you use for testing. VM1 is protected by Azure Backup.

You delete VM1.

You need to remove the backup data stored for VM1.

What should you do first?



<https://vceplus.com/>

- A. Delete the Recovery Services vault.
- B. Delete the storage account.
- C. Stop the backup
- D. Modify the backup policy.

**Correct Answer:** D

**Section:** [none]

**Explanation**

**Explanation/Reference:**

Explanation:

Azure Backup provides backup for virtual machines — created through both the classic deployment model and the Azure Resource Manager deployment model — by using custom-defined backup policies in a Recovery Services vault.

With the release of backup policy management, customers can manage backup policies and model them to meet their changing requirements from a single window. Customers can edit a policy, associate more virtual machines to a policy, and delete unnecessary policies to meet their compliance requirements.

Incorrect Answers:

B: You can't delete a Recovery Services vault if it is registered to a server and holds backup data. If you try to delete a vault, but can't, the vault is still configured to receive backup data.

References: <https://azure.microsoft.com/en-in/updates/azure-vm-backup-policy-management/>

#### **QUESTION 11**

You have an Azure subscription named Subscription1.

You deploy a Linux virtual machine named VM1 to Subscription1.

You need to monitor the metrics and the logs of VM1.

What should you use?

- A. the AzurePerformanceDiagnostics extension
- B. Azure HDInsight
- C. Linux Diagnostic Extension (LAD) 3.0
- D. Azure Analysis Services

**Correct Answer:** A

<https://vceplus.com/>



**Section: [none]**

**Explanation**

**Explanation/Reference:**

Explanation:

You can use extensions to configure diagnostics on your VMs to collect additional metric data.

The basic host metrics are available, but to see more granular and VM-specific metrics, you need to install the Azure diagnostics extension on the VM. The Azure diagnostics extension allows additional monitoring and diagnostics data to be retrieved from the VM.

References:

<https://docs.microsoft.com/en-us/azure/virtual-machines/linux/tutorial-monitoring>



<https://vceplus.com/>

## Testlet 2

### Case study

This is a case study. **Case studies are not timed separately. You can use as much exam time as you would like to complete each case.** However, there may be additional case studies and sections on this exam. You must manage your time to ensure that you are able to complete all questions included on this exam in the time provided.

To answer the questions included in a case study, you will need to reference information that is provided in the case study. Case studies might contain exhibits and other resources that provide more information about the scenario that is described in the case study. Each question is independent of the other questions in this case study.

At the end of this case study, a review screen will appear. This screen allows you to review your answers and to make changes before you move to the next section of the exam. After you begin a new section, you cannot return to this section.

### To start the case study

To display the first question in this case study, click the **Next** button. Use the buttons in the left pane to explore the content of the case study before you answer the questions. Clicking these buttons displays information such as business requirements, existing environment, and problem statements. If the case study has an **All Information** tab, note that the information displayed is identical to the information displayed on the subsequent tabs. When you are ready to answer a question, click the **Question** button to return to the question. **Overview**

Contoso, Ltd. is a consulting company that has a main office in Montreal and two branch offices in Seattle and New York.

The Montreal office has 2,000 employees. The Seattle office has 1,000 employees. The New York office has 200 employees.

All the resources used by Contoso are hosted on-premises.

Contoso creates a new Azure subscription. The Azure Active Directory (Azure AD) tenant uses a domain named contoso.onmicrosoft.com. The tenant uses the P1 pricing tier.

### Existing Environment

The network contains an Active Directory forest named contoso.com. All domain controllers are configured as DNS servers and host the contoso.com DNS zone.

Contoso has finance, human resources, sales, research, and information technology departments. Each department has an organizational unit (OU) that contains all the accounts of that respective department. All the user accounts have the **department** attribute set to their respective department. New users are added frequently.

Contoso.com contains a user named User1.

All the offices connect by using private links.

<https://vceplus.com/>

Contoso has data centers in the Montreal and Seattle offices. Each data center has a firewall that can be configured as a VPN device.

All infrastructure servers are virtualized. The virtualization environment contains the servers in the following table.

Name	Role	Contains virtual machine
Server1	VMWare vCenter server	VM1
Server2	Hyper-V-host	VM2

Contoso uses two web applications named App1 and App2. Each instance on each web application requires 1GB of memory.

The Azure subscription contains the resources in the following table.

Name	Type
VNet1	Virtual network
VM3	Virtual machine
VM4	Virtual machine

The network security team implements several network security groups (NSGs).

### Planned Changes

Contoso plans to implement the following changes:

- Deploy Azure ExpressRoute to the Montreal office.
- Migrate the virtual machines hosted on Server1 and Server2 to Azure.
- Synchronize on-premises Active Directory to Azure Active Directory (Azure AD).
- Migrate App1 and App2 to two Azure web apps named WebApp1 and WebApp2.

### Technical requirements

Contoso must meet the following technical requirements:

- Ensure that WebApp1 can adjust the number of instances automatically based on the load and can scale up to five instances.
  - Ensure that VM3 can establish outbound connections over TCP port 8080 to the applications servers in the Montreal office.
  - Ensure that routing information is exchanged automatically between Azure and the routers in the Montreal office.
  - Ensure Azure Multi-Factor Authentication (MFA) for the users in the finance department only.
  - Ensure that webapp2.azurewebsites.net can be accessed by using the name app2.contoso.com
- 
- Connect the New York office to VNet1 over the Internet by using an encrypted connection.
  - Create a workflow to send an email message when the settings of VM4 are modified.

<https://vceplus.com/>

- Create a custom Azure role named Role1 that is based on the Reader role. ▪
- Minimize costs whenever possible.

### QUESTION 1

You discover that VM3 does **NOT** meet the technical requirements.

You need to verify whether the issue relates to the NSGs.

What should you use?

- A. Diagram in VNet1
- B. the security recommendations in Azure Advisor
- C. Diagnostic settings in Azure Monitor
- D. Diagnose and solve problems in Traffic Manager profiles
- E. IP flow verify in Azure Network Watcher

**Correct Answer:** E

**Section:** [none]

**Explanation**

**Explanation/Reference:**

Explanation:

Scenario: Contoso must meet technical requirements including:

Ensure that VM3 can establish outbound connections over TCP port 8080 to the applications servers in the Montreal office.

IP flow verify checks if a packet is allowed or denied to or from a virtual machine. The information consists of direction, protocol, local IP, remote IP, local port, and remote port. If the packet is denied by a security group, the name of the rule that denied the packet is returned. While any source or destination IP can be chosen, IP flow verify helps administrators quickly diagnose connectivity issues from or to the internet and from or to the on-premises environment.

References:

<https://docs.microsoft.com/en-us/azure/network-watcher/network-watcher-ip-flow-verify-overview>

### Question Set 1

#### QUESTION 1

##### SIMULATION

Please wait while the virtual machine loads. Once loaded, you may proceed to the lab section. This may take a few minutes, and the wait time will not be deducted from your overall test time.

<https://vceplus.com/>

When the Next button is available, click it to access the lab section. In this section, you will perform a set of tasks in a live environment. While most functionality will be available to you as it would be in a live environment, some functionality (e.g, copy and paste, ability to navigate to external websites) will not be possible by design.

Scoring is based on the outcome of performing the tasks stated in the lab. In other words, it doesn't matter how you accomplish the task, if you successfully perform it, you will earn credit for that task.

Labs are not timed separately, and this exam may have more than one lab that you must complete. You can use as much time as you would like to complete each lab. But, you should manage your time appropriately to ensure that you are able to complete the lab(s) and all other sections of the exam in the time provided.

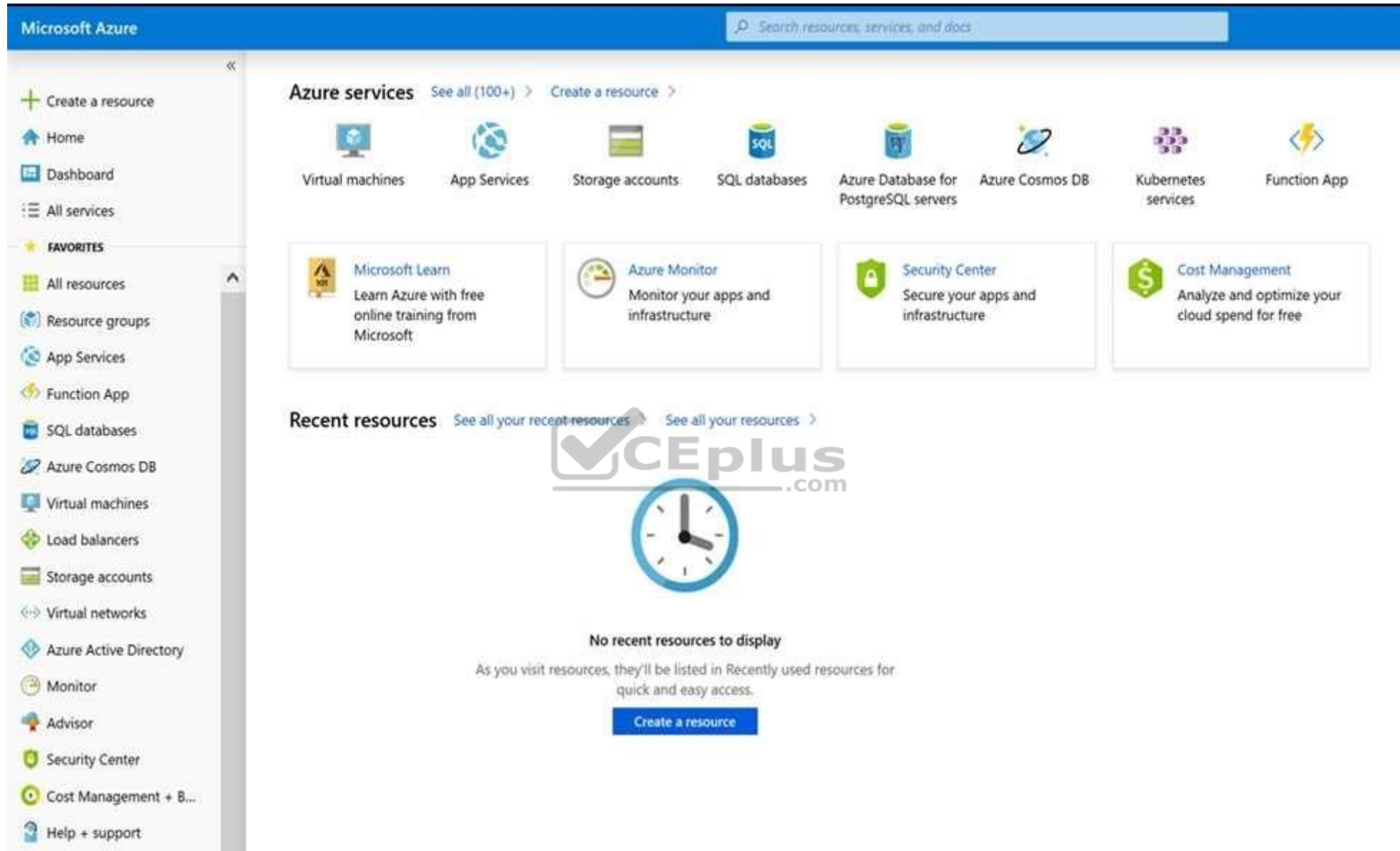
Please note that once you submit your work by clicking the Next button within a lab, you will NOT be able to return to the lab.

You may now click next to proceed to the lab.





<https://vceplus.com/>



Task 8 You need to create a virtual network named VNET1008 that contains three subnets named subnet0, subnet1, and subnet2. The solution must meet the following requirements:

<https://vceplus.com/>

- Connections from any of the subnets to the Internet must be blocked.
- Connections from the Internet to any of the subnets must be blocked.
- The number of network security groups (NSGs) and NSG rules must be minimized.

What should you do from the Azure portal?

**Correct Answer:** See solution below.

**Section:** [none]

**Explanation**

**Explanation/Reference:**

Explanation:

Step 1: Click Create a resource in the portal.

Step 2: Enter Virtual network in the Search the Marketplace box at the top of the New pane that appears. Click Virtual network when it appears in the search results.

Step 3: Select Classic in the Select a deployment model box in the Virtual Network pane that appears, then click Create.

Step 4: Enter the following values on the Create virtual network (classic) pane and then click Create:

Name: VNET1008

Address space: 10.0.0.0/16

Subnet name: subnet0

Resource group: Create new

Subnet address range: 10.0.0.0/24

Subscription and location: Select your subscription and location.

Step 5: In the portal, you can create only one subnet when you create a virtual network. Click Subnets (in the SETTINGS section) on the Create virtual network (classic) pane that appears.

Click +Add on the VNET1008 - Subnets pane that appears.

Step 6: Enter subnet1 for Name on the Add subnet pane. Enter 10.0.1.0/24 for Address range. Click OK.

Step 7: Create the third subnet: Click +Add on the VNET1008 - Subnets pane that appears. Enter subnet2 for Name on the Add subnet pane. Enter 10.0.2.0/24 for Address range. Click OK.

References:

<https://docs.microsoft.com/en-us/azure/virtual-network/create-virtual-network-classic>

**QUESTION 2**

<https://vceplus.com/>



**Note: This question is part of a series of questions that present the same scenario. Each question in the series contains a unique solution that might meet the stated goals. Some question sets might have more than one correct solution, while others might not have a correct solution.**

**After you answer a question in this section, you will NOT be able to return to it. As a result, these questions will not appear in the review screen.**

You manage a virtual network named VNet1 that is hosted in the West US Azure region.

VNet1 hosts two virtual machines named VM1 and VM2 that run Windows Server.

You need to inspect all the network traffic from VM1 to VM2 for a period of three hours.

Solution: From Azure Network Watcher, you create a connection monitor.

Does this meet the goal?

A. Yes

B. No

**Correct Answer: A**

**Section: [none]**

**Explanation**

**Explanation/Reference:**

References: <https://azure.microsoft.com/en-us/updates/general-availability-azure-network-watcher-connection-monitor-in-all-public-regions/>



### QUESTION 3

**Note: This question is part of a series of questions that present the same scenario. Each question in the series contains a unique solution that might meet the stated goals. Some question sets might have more than one correct solution, while others might not have a correct solution.**

**After you answer a question in this section, you will NOT be able to return to it. As a result, these questions will not appear in the review screen.**

You manage a virtual network named VNet1 that is hosted in the West US Azure region.

VNet1 hosts two virtual machines named VM1 and VM2 that run Windows Server.

You need to inspect all the network traffic from VM1 to VM2 for a period of three hours.

Solution: From Azure Network Watcher, you create a packet capture.

Does this meet the goal?

<https://vceplus.com/>

- A. Yes
- B. No

**Correct Answer:** B

**Section:** [none]

**Explanation**

**Explanation/Reference:**

Explanation:

Use the Connection Monitor feature of Azure Network Watcher.

References: <https://azure.microsoft.com/en-us/updates/general-availability-azure-network-watcher-connection-monitor-in-all-public-regions/>

#### QUESTION 4

You have an Azure subscription named Subscription1 that contains two Azure virtual networks named VNet1 and VNet2. VNet1 contains a VPN gateway named VPNGW1 that uses static routing. There is a site-to-site VPN connection between your on-premises network and VNet1.

On a computer named Client1 that runs Windows 10, you configure a point-to-site VPN connection to VNet1.

You configure virtual network peering between VNet1 and VNet2. You verify that you can connect to VNet2 from the on-premises network. Client1 is unable to connect to VNet2.

You need to ensure that you can connect Client1 to VNet2.

What should you do?

- A. Select **Allow gateway transit** on VNet2.
- B. Enable BGP on VPNGW1.
- C. Select **Allow gateway transit** on VNet1.
- D. Download and re-install the VPN client configuration package on Client1.

**Correct Answer:** D

**Section:** [none]

**Explanation**

**Explanation/Reference:**

References:

<https://docs.microsoft.com/en-us/azure/vpn-gateway/vpn-gateway-about-point-to-site-routing>

<https://vceplus.com/>

### QUESTION 5

**Note:** This question is part of a series of questions that present the same scenario. Each question in the series contains a unique solution that might meet the stated goals. Some question sets might have more than one correct solution, while others might not have a correct solution.

After you answer a question in this section, you will NOT be able to return to it. As a result, these questions will not appear in the review screen.

You manage a virtual network named VNet1 that is hosted in the West US Azure region.

VNet1 hosts two virtual machines named VM1 and VM2 that run Windows Server.

You need to inspect all the network traffic from VM1 to VM2 for a period of three hours.

Solution: From Performance Monitor, you create a Data Collector Set (DCS).

Does this meet the goal?

- A. Yes
- B. No

**Correct Answer:** B

**Section:** [none]

**Explanation**



**Explanation/Reference:**

Explanation:

Use the Connection Monitor feature of Azure Network Watcher.

References: <https://docs.microsoft.com/en-us/azure/network-watcher/network-watcher-monitoring-overview>

### QUESTION 6

You have an Azure subscription that contains the resources in the following table.

Name	Type	Details
VNet1	Virtual network	<i>Not applicable</i>
Subnet1	Subnet	Hosted on VNet1
VM1	Virtual machine	On Subnet1
VM2	Virtual machine	On Subnet1

<https://vceplus.com/>

VM1 and VM2 are deployed from the same template and host line-of-business applications accessed by using Remote Desktop.

You configure the network security group (NSG) shown in the exhibit. (Click the **Exhibit** tab.)



[→ Move](#)
[🗑 Delete](#)
[🔄 Refresh](#)

Resource group (change) : [RG1lod9053488](#)

Custom security rules : 1 inbound, 1 outbound

Location : East US

Associated with : 0 subnets, 0 network interfaces

Subscription (change) : [Microsoft AZ](#)

Subscription ID : ac344a74-f85a-4b2e-8057-642088faaf20

Tags (change) : [Click here to add tags](#)



### Inbound security rules

PRIORITY	NAME	PORT	PROTOCOL	SOURCE	DESTINATION	ACTION
100	Port_80	80	TCP	Internet	Any	🚫 Deny
65000	AllowVnetInBound	Any	Any	VirtualNetwork	VirtualNetwork	✅ Allow
65001	AllowAzureLoadBalancerInBound	Any	Any	AzureLoadBalancer	Any	✅ Allow
65500	DenyAllInBound	Any	Any	Any	Any	🚫 Deny

### Outbound security rules

PRIORITY	NAME	PORT	PROTOCOL	SOURCE	DESTINATION	ACTION
100	⚠ DenyWebSites	80	TCP	Any	Internet	🚫 Deny
65000	AllowVnetOutBound	Any	Any	VirtualNetwork	VirtualNetwork	✅ Allow
65001	AllowInternetOutBound	Any	Any	Any	Internet	✅ Allow
65500	DenyAllOutBound	Any	Any	Any	Any	🚫 Deny

<https://vceplus.com/>

You need to prevent users of VM2 and VM2 from accessing websites on the Internet over TCP port 80.

What should you do?

- A. Change the DenyWebSites outbound security rule.
- B. Change the Port\_80 inbound security rule.
- C. Disassociate the NSG from a network interface.
- D. Associate the NSG to Subnet1.

**Correct Answer:** D

**Section:** [none]

**Explanation**

**Explanation/Reference:**

Explanation:

You can associate or dissociate a network security group from a network interface or subnet.

The NSG has the appropriate rule to block users from accessing the Internet. We just need to associate it with Subnet1.

References: <https://docs.microsoft.com/en-us/azure/virtual-network/manage-network-security-group>

## QUESTION 7

### SIMULATION

Please wait while the virtual machine loads. Once loaded, you may proceed to the lab section. This may take a few minutes, and the wait time will not be deducted from your overall test time.

When the Next button is available, click it to access the lab section. In this section, you will perform a set of tasks in a live environment. While most functionality will be available to you as it would be in a live environment, some functionality (e.g. copy and paste, ability to navigate to external websites) will not be possible by design.

Scoring is based on the outcome of performing the tasks stated in the lab. In other words, it doesn't matter how you accomplish the task, if you successfully perform it, you will earn credit for that task.

Labs are not timed separately, and this exam may have more than one lab that you must complete. You can use as much time as you would like to complete each lab. But, you should manage your time appropriately to ensure that you are able to complete the lab(s) and all other sections of the exam in the time provided.

Please note that once you submit your work by clicking the Next button within a lab, you will NOT be able to return to the lab.

You may now click next to proceed to the lab.

<https://vceplus.com/>

Use the following login credentials as needed:

**Azure Username:** XXXXXXXX

**Azure Password:** XXXXXXXX

The following information is for technical support purposes only:

**Lab Instance:** 9172796



Task 8

You plan to host several secured websites on Web01.

You need to allow HTTPS over TCP port 443 to Web01 and to prevent HTTP over TCP port 80 to Web01.

What should you do from the Azure portal?

**Correct Answer:** See solution below.

<https://vceplus.com/>

**Section: [none]**

**Explanation**

**Explanation/Reference:**

Explanation:

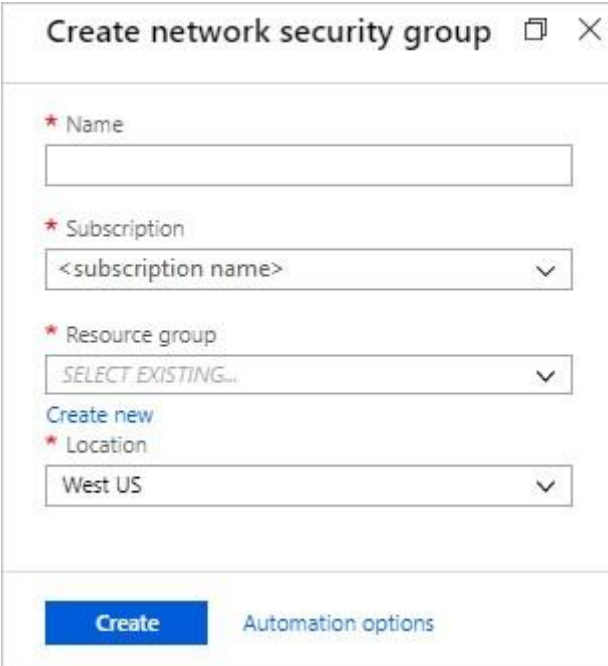
You can filter network traffic to and from Azure resources in an Azure virtual network with a network security group. A network security group contains security rules that allow or deny inbound network traffic to, or outbound network traffic from, several types of Azure resources.

A network security group contains security rules that allow or deny inbound network traffic to, or outbound network traffic from, several types of Azure resources.

Step A: Create a network security group

A1. Search for and select the resource group for the VM, choose Add, then search for and select Network security group.

A2. Select Create.



The Create network security group window opens.

A3. Create a network security group

Enter a name for your network security group.

<https://vceplus.com/>



Select or create a resource group, then select a location.

A4. Select Create to create the network security group.

Step B: Create an inbound security rule to allows HTTPS over TCP port 443

B1. Select your new network security group.

B2. Select Inbound security rules, then select Add.

B3. Add inbound rule

B4. Select Advanced.

From the drop-down menu, select HTTPS.

You can also verify by clicking Custom and selecting TCP port, and 443.

B5. Select Add to create the rule.

Repeat step B2-B5 to deny TCP port 80

B6. Select Inbound security rules, then select Add.

B7. Add inbound rule

B8. Select Advanced.

Clicking Custom and selecting TCP port, and 80.

B9. Select Deny.

Step C: Associate your network security group with a subnet

Your final step is to associate your network security group with a subnet or a specific network interface.

C1. In the Search resources, services, and docs box at the top of the portal, begin typing Web01. When the Web01 VM appears in the search results, select it.

C2. Under SETTINGS, select Networking. Select Configure the application security groups, select the Security Group you created in Step A, and then select Save, as shown in the following picture:

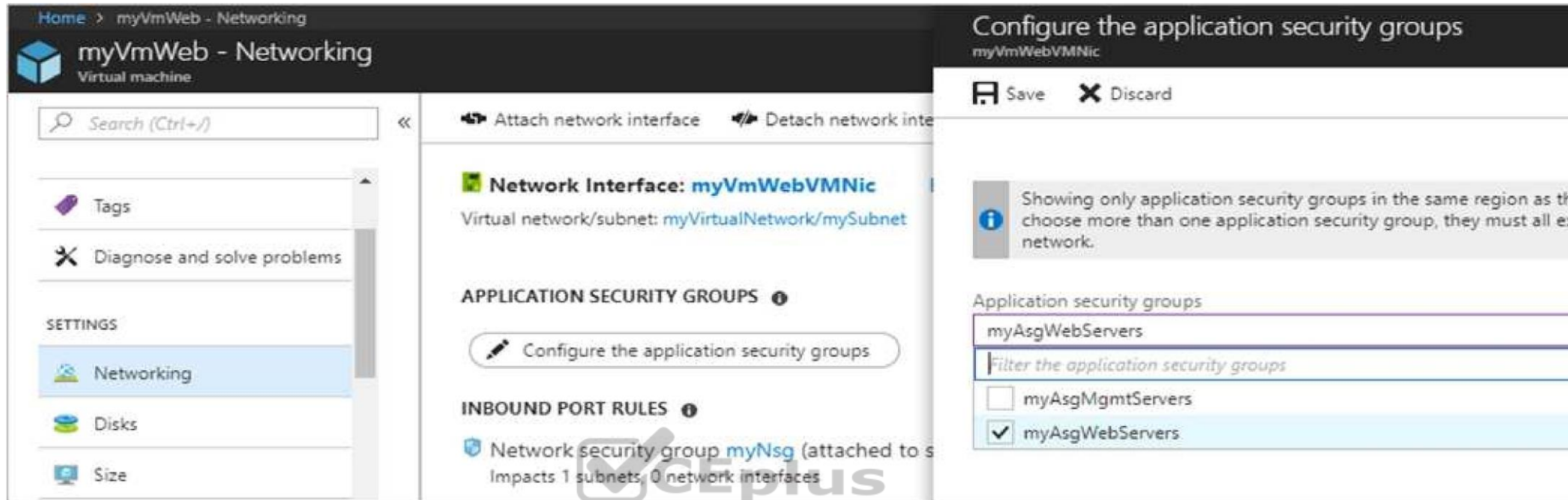
References:

<https://docs.microsoft.com/en-us/azure/virtual-network/tutorial-filter-network-traffic>

## QUESTION 8

**Note: This question is part of a series of questions that present the same scenario. Each question in the series contains a unique solution that might meet the stated goals. Some question sets might have more than one correct solution, while others might not have a correct solution.**

<https://vceplus.com/>



After you answer a question in this section, you will NOT be able to return to it. As a result, these questions will not appear in the review screen.

Your company registers a domain name of contoso.com.

You create an Azure DNS zone named contoso.com, and then you add an A record to the zone for a host named www that has an IP address of 131.107.1.10.

You discover that Internet hosts are unable to resolve www.contoso.com to the 131.107.1.10 IP address.

You need to resolve the name resolution issue.

Solution: You create a PTR record for www in the contoso.com zone.

Does this meet the goal?

- A. Yes
- B. No

**Correct Answer: B**

**Section: [none]**

**Explanation**

<https://vceplus.com/>

**Explanation/Reference:**

Modify the Name Server (NS) record.

References: <https://docs.microsoft.com/en-us/azure/dns/dns-delegate-domain-azure-dns>

**QUESTION 9**

You have five Azure virtual machines that run Windows Server 2016. The virtual machines are configured as web servers.

You have an Azure load balancer named LB1 that provides load balancing services for the virtual machines.

You need to ensure that visitors are serviced by the same web server for each request.

What should you configure?

- A. Idle Time-out (minutes) to **20**
- B. Floating IP (direct server return) to **Disabled**
- C. Floating IP (direct server return) to **Enabled**
- D. Session persistence to **Client IP and protocol**
- E. a health probe



**Correct Answer:** D

**Section:** [none]

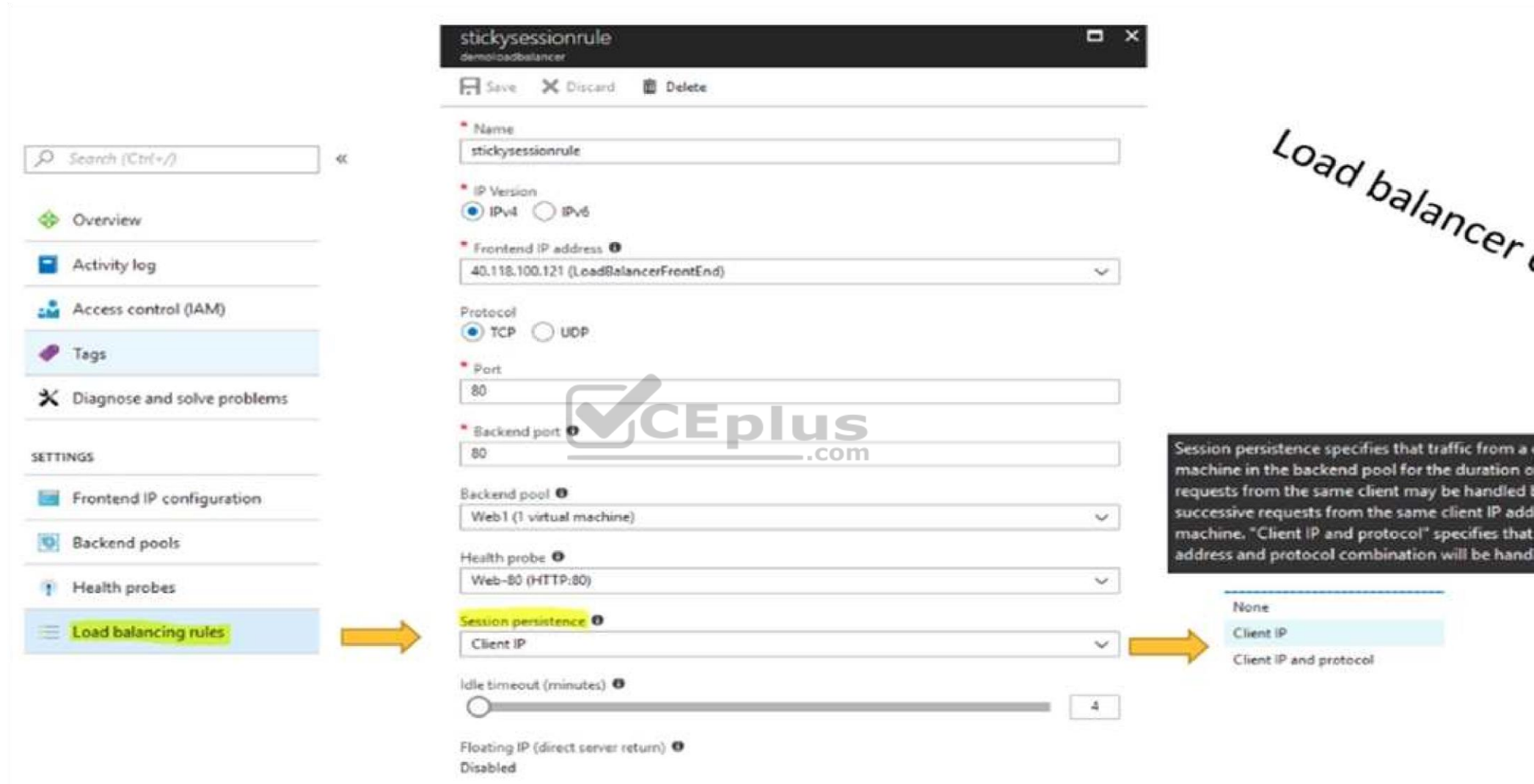
**Explanation**

**Explanation/Reference:**

Explanation:

With Sticky Sessions when a client starts a session on one of your web servers, session stays on that specific server. To configure An Azure Load-Balancer For Sticky Sessions set Session persistence to Client IP.

On the following image you can see sticky session configuration:



The screenshot shows the configuration for a sticky session rule named 'stickysessionrule' on a load balancer. The configuration includes:

- Name: stickysessionrule
- IP Version: IPv4
- Frontend IP address: 40.118.100.121 (LoadBalancerFrontEnd)
- Protocol: TCP
- Port: 80
- Backend port: 80
- Backend pool: Web1 (1 virtual machine)
- Health probe: Web-80 (HTTP:80)
- Session persistence: Client IP
- Idle timeout (minutes): 4
- Floating IP (direct server return): Disabled

A callout box explains: "Session persistence specifies that traffic from a client machine in the backend pool for the duration of the session. Successive requests from the same client IP address will be handled by the same backend machine. 'Client IP and protocol' specifies that address and protocol combination will be handled by the same backend machine."

Reference:

<https://cloudopszone.com/configure-azure-load-balancer-for-sticky-sessions/> **QUESTION 10**

You have a public load balancer that balances ports 80 and 443 across three virtual machines.

<https://vceplus.com/>

You need to direct all the Remote Desktop Protocol (RDP) connections to VM3 only.

What should you configure?

- A. an inbound NAT rule
- B. a load balancing rule
- C. a new public load balancer for VM3
- D. a frontend IP configuration

**Correct Answer:** A

**Section:** [none]

**Explanation**

**Explanation/Reference:**

References:

<https://docs.microsoft.com/en-us/azure/load-balancer/tutorial-load-balancer-port-forwarding-portal>

<https://pixelrobots.co.uk/2017/08/azure-load-balancer-for-rds/>

#### QUESTION 11

You have an Azure subscription that contains three virtual networks named VNet1, VNet2, and VNet3. VNet2 contains a virtual appliance named VM2 that operates as a router.

You are configuring the virtual networks in a hub and spoke topology that uses VNet2 as the hub network.

You plan to configure peering between VNet1 and Vnet2 and between VNet2 and VNet3.

You need to provide connectivity between VNet1 and VNet3 through VNet2.

Which two configurations should you perform? Each correct answer presents part of the solution.

- A. On the peering connections, use remote gateways.
- B. On the peering connections, allow forwarded traffic.
- C. On the peering connections, allow gateway transit.
- D. Create route tables and assign the table to subnets.
- E. Create a route filter.

**Correct Answer:** AC

**Section:** [none]

**Explanation**

<https://vceplus.com/>

**Explanation/Reference:**

Explanation:

Allow gateway transit: Check this box if you have a virtual network gateway attached to this virtual network and want to allow traffic from the peered virtual network to flow through the gateway.

The peered virtual network must have the Use remote gateways checkbox checked when setting up the peering from the other virtual network to this virtual network.

References: <https://docs.microsoft.com/en-us/azure/virtual-network/virtual-network-manage-peering#requirements-and-constraints>

**QUESTION 12**

You have an Azure subscription named Subscription1 that contains an Azure virtual network named VNet1. VNet1 connects to your on-premises network by using Azure ExpressRoute.

You need to connect VNet1 to the on-premises network by using a site-to-site VPN. The solution must minimize cost.

Which three actions should you perform? Each correct answer presents part of the solution.

**NOTE:** Each correct selection is worth one point.

- A. Create a gateway subnet.
- B. Create a VPN gateway that uses the Basic SKU.
- C. Create a connection.
- D. Create a local site VPN gateway.
- E. Create a VPN gateway that uses the VpnGw1 SKU.



**Correct Answer:** ABC

**Section:** [none]

**Explanation**

**Explanation/Reference:**

References: <https://docs.microsoft.com/en-us/azure/vpn-gateway/vpn-gateway-howto-site-to-site-resource-manager-portal>

**QUESTION 13**

**Note:** This question is part of a series of questions that present the same scenario. Each question in the series contains a unique solution that might meet the stated goals. Some question sets might have more than one correct solution, while others might not have a correct solution.

**After you answer a question in this section, you will NOT be able to return to it. As a result, these questions will not appear in the review screen.**

<https://vceplus.com/>

Your company registers a domain name of contoso.com.

You create an Azure DNS zone named contoso.com, and then you add an A record to the zone for a host named www that has an IP address of 131.107.1.10.

You discover that Internet hosts are unable to resolve www.contoso.com to the 131.107.1.10 IP address.

You need to resolve the name resolution issue.

Solution: You modify the name servers at the domain registrar.

Does this meet the goal?

- A. Yes
- B. No

**Correct Answer: B**

**Section: [none]**

**Explanation**

**Explanation/Reference:**

Explanation:

Modify the Name Server (NS) record.



References: <https://docs.microsoft.com/en-us/azure/dns/dns-delegate-domain-azure-dns>

#### **QUESTION 14**

**Note: This question is part of a series of questions that present the same scenario. Each question in the series contains a unique solution that might meet the stated goals. Some question sets might have more than one correct solution, while others might not have a correct solution.**

**After you answer a question in this section, you will NOT be able to return to it. As a result, these questions will not appear in the review screen.**

Your company registers a domain name of contoso.com.

You create an Azure DNS zone named contoso.com, and then you add an A record to the zone for a host named www that has an IP address of 131.107.1.10.

You discover that Internet hosts are unable to resolve www.contoso.com to the 131.107.1.10 IP address.

You need to resolve the name resolution issue.

Solution: You modify the SOA record in the contoso.com zone.

<https://vceplus.com/>

Does this meet the goal?

- A. Yes
- B. No

**Correct Answer:** B

**Section:** [none]

**Explanation**

**Explanation/Reference:**

Explanation:

Modify the NS record, not the SOA record.

Note: The SOA record stores information about the name of the server that supplied the data for the zone; the administrator of the zone; the current version of the data file; the number of seconds a secondary name server should wait before checking for updates; the number of seconds a secondary name server should wait before retrying a failed zone transfer; the maximum number of seconds that a secondary name server can use data before it must either be refreshed or expire; and a default number of seconds for the time-to-live file on resource records.

References:

<https://searchnetworking.techtarget.com/definition/start-of-authority-record>



#### QUESTION 15

**Note: This question is part of a series of questions that present the same scenario. Each question in the series contains a unique solution that might meet the stated goals. Some question sets might have more than one correct solution, while others might not have a correct solution.**

**After you answer a question in this section, you will NOT be able to return to it. As a result, these questions will not appear in the review screen.**

Your company registers a domain name of contoso.com.

You create an Azure DNS zone named contoso.com, and then you add an A record to the zone for a host named www that has an IP address of 131.107.1.10.

You discover that Internet hosts are unable to resolve www.contoso.com to the 131.107.1.10 IP address.

You need to resolve the name resolution issue.

Solution: You add an NS record to the contoso.com Azure DNS zone.

Does this meet the goal?

- A. Yes
- B. No

<https://vceplus.com/>



**Correct Answer:** A

**Section:** [none]

**Explanation**

**Explanation/Reference:**

Explanation:

Before you can delegate your DNS zone to Azure DNS, you need to know the name servers for your zone. The NS record set contains the names of the Azure DNS name servers assigned to the zone.

References: <https://docs.microsoft.com/en-us/azure/dns/dns-delegate-domain-azure-dns>

#### **QUESTION 16**

You are troubleshooting a performance issue for an Azure Application Gateway.

You need to compare the total requests to the failed requests during the past six hours.

What should you use?

- A. NSG flow logs in Azure Network Watcher
- B. Metrics in Application Gateway
- C. Connection monitor in Azure Network Watcher
- D. Diagnostics logs in Application Gateway



**Correct Answer:** B

**Section:** [none]

**Explanation**

**Explanation/Reference:**

References: <https://docs.microsoft.com/en-us/azure/application-gateway/application-gateway-diagnostics#metrics>

#### **QUESTION 17**

You have two subscriptions named Subscription1 and Subscription2. Each subscription is associated to a different Azure AD tenant.

Subscription1 contains a virtual network named VNet1. VNet1 contains an Azure virtual machine named VM1 and has an IP address space of 10.0.0.0/16.

Subscription2 contains a virtual network named VNet2. VNet2 contains an Azure virtual machine named VM2 and has an IP address space of 10.10.0.0/24.

You need to connect VNet1 to VNet2.

<https://vceplus.com/>

What should you do first?

- A. Move VM1 to Subscription2.
- B. Modify the IP address space of VNet2.
- C. Provision virtual network gateways.
- D. Move VNet1 to Subscription2.

**Correct Answer:** C

**Section:** [none]

**Explanation**

**Explanation/Reference:**

Explanation:

The virtual networks can be in the same or different regions, and from the same or different subscriptions. When connecting VNets from different subscriptions, the subscriptions do not need to be associated with the same Active Directory tenant.

Configuring a VNet-to-VNet connection is a good way to easily connect VNets. Connecting a virtual network to another virtual network using the VNet-to-VNet connection type (VNet2VNet) is similar to creating a Site-to-Site IPsec connection to an on-premises location. Both connectivity types use a VPN gateway to provide a secure tunnel using IPsec/IKE, and both function the same way when communicating.

The local network gateway for each VNet treats the other VNet as a local site. This lets you specify additional address space for the local network gateway in order to route traffic.

References: <https://docs.microsoft.com/en-us/azure/vpn-gateway/vpn-gateway-howto-vnet-vnet-resource-manager-portal>

### QUESTION 18

You have an Azure subscription that contains the resources in the following table.

Name	Type	Azure region	Resource group
VNet1	Virtual network	West US	RG2
VNet2	Virtual network	West US	RG1
VNet3	Virtual network	East US	RG1
NSG1	Network security group (NSG)	East US	RG2

To which subnets can you apply NSG1?

<https://vceplus.com/>

- A. the subnets on VNet2 only
- B. the subnets on VNet2 and VNet3 only
- C. the subnets on VNet1, VNet2, and VNet3
- D. the subnets on VNet1 only
- E. the subnets on VNet3 only

**Correct Answer:** E

**Section:** [none]

**Explanation**

**Explanation/Reference:**

Explanation:

All Azure resources are created in an Azure region and subscription. A resource can only be created in a virtual network that exists in the same region and subscription as the resource.

References: <https://docs.microsoft.com/en-us/azure/virtual-network/virtual-network-vnet-plan-design-arm>

## QUESTION 19

### HOTSPOT



You have an Azure virtual machine named VM1 that connects to a virtual network named VNet1. VM1 has the following configurations:

- Subnet 10.0.0.0/24
- Availability set: AVSet
- Network security group (NSG): None
- Private IP address: 10.0.0.4 (dynamic)
- Public IP address: 40.90.219.6 (dynamic)

You deploy a standard, Internet-facing load balancer named slb1.

You need to configure slb1 to allow connectivity to VM1.

Which changes should you apply to VM1 as you configure slb1? To answer, select the appropriate options in the answer area.

**NOTE:** Each correct selection is worth one point.

**Hot Area:**

<https://vceplus.com/>

### Answer Area

Before you create a backend pool on slb1, you must:

	▼
Create and assign an NSG to VM1	
Remove the public IP address from VM1	
Change the private IP address of VM1 to static	

Before you can connect to VM1 from slb1, you must:

	▼
Create and configure an NSG	
Remove the public IP address from VM1	
Change the private IP address of VM1 to static	

Correct Answer:

### Answer Area

Before you create a backend pool on slb1, you must:

	▼
Create and assign an NSG to VM1	
Remove the public IP address from VM1	
Change the private IP address of VM1 to static	

Before you can connect to VM1 from slb1, you must:

	▼
Create and configure an NSG	
Remove the public IP address from VM1	
Change the private IP address of VM1 to static	

Section: [none]

Explanation

Explanation/Reference:

### QUESTION 20

You have five Azure virtual machines that run Windows Server 2016. The virtual machines are configured as web servers.

You have an Azure load balancer named LB1 that provides load balancing services for the virtual machines.

<https://vceplus.com/>

You need to ensure that visitors are serviced by the same web server for each request.

What should you configure?

- A. Protocol to **UDP**
- B. Session persistence to **None**
- C. Session persistence to **Client IP**
- D. Idle Time-out (minutes) to **20**

**Correct Answer:** C

**Section:** [none]

**Explanation**

**Explanation/Reference:**

Explanation:

You can set the sticky session in load balancer rules with setting the session persistence as the client IP.

References: <https://cloudopszone.com/configure-azure-load-balancer-for-sticky-sessions/>



#### QUESTION 21

You have the Azure virtual networks shown in the following table.

Name	Address space	Subnet	Resource group Azure region
VNet1	10.11.0.0/16	10.11.0.0/17	West US
VNet2	10.11.0.0/17	10.11.0.0/25	West US
VNet3	10.10.0.0/22	10.10.1.0/24	East US
VNet4	192.168.16.0/22	192.168.16.0/24	North Europe

To which virtual networks can you establish a peering connection from VNet1?

- A. VNet2 and VNet3 only
- B. VNet2 only
- C. VNet3 and VNet4 only
- D. VNet2, VNet3, and VNet4

<https://vceplus.com/>

**Correct Answer:** D

**Section:** [none]

**Explanation**

**Explanation/Reference:**

References:

<https://docs.microsoft.com/en-us/azure/virtual-network/tutorial-connect-virtual-networks-portal>

**QUESTION 22**

You have an Azure subscription that contains a policy-based virtual network gateway named GW1 and a virtual network named VNet1.

You need to ensure that you can configure a point-to-site connection from VNet1 to an on-premises computer.

Which two actions should you perform? Each correct answer presents part of the solution.

**NOTE:** Each correct selection is worth one point.

- A. Reset GW1.
- B. Create a route-based virtual network gateway.
- C. Delete GW1.
- D. Add a public IP address space to VNet1.
- E. Add a connection to GW1.
- F. Add a service endpoint to VNet1.



**Correct Answer:** BC

**Section:** [none]

**Explanation**

**Explanation/Reference:**

Explanation:

B: A VPN gateway is used when creating a VPN connection to your on-premises network.

Route-based VPN devices use any-to-any (wildcard) traffic selectors, and let routing/forwarding tables direct traffic to different IPsec tunnels. It is typically built on router platforms where each IPsec tunnel is modeled as a network interface or VTI (virtual tunnel interface).

C: Policy-based VPN devices use the combinations of prefixes from both networks to define how traffic is encrypted/decrypted through IPsec tunnels. It is typically built on firewall devices that perform packet filtering. IPsec tunnel encryption and decryption are added to the packet filtering and processing engine.

Incorrect Answers:

D: Point-to-Site connections do not require a VPN device or a public-facing IP address.

<https://vceplus.com/>

References: <https://docs.microsoft.com/en-us/azure/vpn-gateway/create-routebased-vpn-gateway-portal> <https://docs.microsoft.com/en-us/azure/vpn-gateway/vpn-gateway-connect-multiple-policybased-rm-ps>

### QUESTION 23

**Note:** This question is part of a series of questions that present the same scenario. Each question in the series contains a unique solution that might meet the stated goals. Some question sets might have more than one correct solution, while others might not have a correct solution.

**After you answer a question in this section, you will NOT be able to return to it. As a result, these questions will not appear in the review screen.**

You have an Azure subscription that contains 10 virtual networks. The virtual networks are hosted in separate resource groups.

Another administrator plans to create several network security groups (NSGs) in the subscription.

You need to ensure that when an NSG is created, it automatically blocks TCP port 8080 between the virtual networks.

Solution: You create a resource lock, and then you assign the lock to the subscription.

Does this meet the goal?

- A. Yes
- B. No



**Correct Answer:** B

**Section:** [none]

**Explanation**

**Explanation/Reference:**

Explanation:

How can I freeze or lock my production/critical Azure resources from accidental deletion? There is a way to do this with both ASM and ARM resources using Azure resource lock.

Reference:

<https://blogs.msdn.microsoft.com/azureedu/2016/04/27/using-azure-resource-manager-policy-and-azure-lock-to-control-your-azure-resources/>

### QUESTION 24

**Note:** This question is part of a series of questions that present the same scenario. Each question in the series contains a unique solution that might meet the stated goals. Some question sets might have more than one correct solution, while others might not have a correct solution.

**After you answer a question in this section, you will NOT be able to return to it. As a result, these questions will not appear in the review screen.**

<https://vceplus.com/>

You have an Azure subscription that contains 10 virtual networks. The virtual networks are hosted in separate resource groups.

Another administrator plans to create several network security groups (NSGs) in the subscription.

You need to ensure that when an NSG is created, it automatically blocks TCP port 8080 between the virtual networks.

Solution: You configure a custom policy definition, and then you assign the policy to the subscription.

Does this meet the goal?

- A. Yes
- B. No

**Correct Answer:** A

**Section:** [none]

**Explanation**

**Explanation/Reference:**

Explanation:

Resource policy definition used by Azure Policy enables you to establish conventions for resources in your organization by describing when the policy is enforced and what effect to take. By defining conventions, you can control costs and more easily manage your resources.

Reference:

<https://docs.microsoft.com/en-us/azure/azure-policy/policy-definition>

## QUESTION 25

**Note: This question is part of a series of questions that present the same scenario. Each question in the series contains a unique solution that might meet the stated goals. Some question sets might have more than one correct solution, while others might not have a correct solution.**

**After you answer a question in this section, you will NOT be able to return to it. As a result, these questions will not appear in the review screen.**

You have an Azure subscription that contains 10 virtual networks. The virtual networks are hosted in separate resource groups.

Another administrator plans to create several network security groups (NSGs) in the subscription.

You need to ensure that when an NSG is created, it automatically blocks TCP port 8080 between the virtual networks.

Solution: From the Resource providers blade, you unregister the Microsoft.ClassicNetwork provider.

Does this meet the goal?

<https://vceplus.com/>



- A. Yes
- B. No

**Correct Answer:** B

**Section:** [none]

**Explanation**

**Explanation/Reference:**

Explanation:

You should use a policy definition.

Reference:

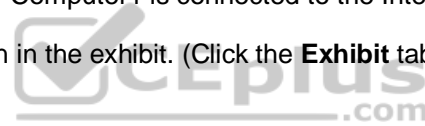
<https://docs.microsoft.com/en-us/azure/azure-policy/policy-definition>

**QUESTION 26**

You have an Azure subscription named Subscription1. Subscription1 contains a virtual machine named VM1.

You have a computer named Computer1 that runs Windows 10. Computer1 is connected to the Internet.






You add a network interface named Interface1 to VM1 as shown in the exhibit. (Click the **Exhibit** tab.)



**Network Interface: vm1173**    Effective security rules    Topology  
 Virtual network/subnet: RG1-vnet/default    Public IP: VM1-ip    Private IP: 10.0.0.5    Accelerated  
 networking: **Disabled**

[Inbound port rules](#)    [Outbound port rules](#)    [Application security groups](#)    [Load balancing](#)

Network security group VM1-nsg (attached to network interface: vm1173) [Add inbound port rule](#)  
 Impacts 0 subnets, 1 network interfaces

PRIORITY	NAME	PORT	PROT...	SOURCE	DESTINATI...	ACTION
300	 RDP	3389	TCP	Any	Any	 Allow ...
65000	AllowVnetInBound	Any	Any	VirtualNetw...	VirtualNe...	 Allow ...
65001	AllowAzureLoadBalancerInBo...	Any	Any	AzureLoadB...	Any	 Allow ...
65500	DenyAllInBound	Any	Any	Any	Any	 Deny ...

From Computer1, you attempt to connect to VM1 by using Remote Desktop, but the connection fails.

You need to establish a Remote Desktop connection to VM1.

What should you do first?

- A. Change the priority of the RDP rule.
- B. Attach a network interface.
- C. Delete the DenyAllInBound rule.
- D. Start VM1.

**Correct Answer:** D

**Section:** [none]

**Explanation**

**Explanation/Reference:**

Explanation:

<https://vceplus.com/>

Incorrect Answers:

A: Rules are processed in priority order, with lower numbers processed before higher numbers, because lower numbers have higher priority. Once traffic matches a rule, processing stops. RDP already has the lowest number and thus the highest priority.

B: The network interface has already been added to VM.

C: The Outbound rules are fine.

Reference:

<https://docs.microsoft.com/en-us/azure/virtual-network/security-overview>

### QUESTION 27

You have an Azure virtual machine named VM1.

The network interface for VM1 is configured as shown in the exhibit. (Click the **Exhibit** tab.)




Network Interface: **vm1175**
Effective security rules
Topology
  
 Virtual network/subnet: **RG5-vnet/default**
Public IP: **40.127.109.108**
Private IP: **172.16.1.4**
Accelerated networking: **Disabled**

### APPLICATION SECURITY GROUPS

 Configure the application security groups

### INBOUND PORT RULES

Network security group **VM1-nsg** (attached to network interface: **vm1175**)
Add inbound port rule
  
 Impacts 0 subnets, 1 network interfaces

PRIORITY	NAME	PORT	PROTOCOL	SOURCE	DESTINATION	ACTION	
300	 RDP	3389	TCP	Any	Any	 Allow	...
400	 Rule1	80	TCP	Any	Any	 Deny	...
500	Rule2	80,443	TCP	Any	Any	 Deny	...
1000	Rule4	50-100,400-500	UDP	Any	Any	 Allow	...
2000	Rule5	50-5000	Any	Any	VirtualNetwork	 Deny	...
3000	Rule6	150-300	Any	Any	Any	 Allow	...
4000	Rule3	60-500	Any	Any	VirtualNetwork	 Allow	...
65000	AllowVnetInBound	Any	Any	VirtualNetwork	VirtualNetwork	 Allow	...
65001	AllowAzureLoadBalancerInBo...	Any	Any	AzureLoadBala...	Any	 Allow	...
65500	DenyAllInBound	Any	Any	Any	Any	 Deny	...

You deploy a web server on VM1, and then create a secure website that is accessible by using the HTTPS protocol. VM1 is used as a web server only.

You need to ensure that users can connect to the website from the internet.

<https://vceplus.com/>

What should you do?

- A. Create a new inbound rule that allows TCP protocol 443 and configure the protocol to have a priority of 501.
- B. For Rule5, change the Action to **Allow** and change the priority to **401**.
- C. Delete Rule1.
- D. Modify the protocol of Rule4.

**Correct Answer:** B

**Section:** [none]

**Explanation**

**Explanation/Reference:**

Explanation:

Rule 2 is blocking HTTPS access (port 443) and has a priority of 500.

Changing Rule 5 (ports 50-5000) and giving it a lower priority number will allow access on port 443.

Note: Rules are processed in priority order, with lower numbers processed before higher numbers, because lower numbers have higher priority. Once traffic matches a rule, processing stops.

Incorrect Answers:

A: Rule 2 is blocking HTTPS access (port 443) and has a priority of 500. Creating a rule for the same protocol (443) with a higher priority number will not help.

C: Rule 1 blocks access to port 80, which is used for HTTP, not HTTPS.

D: Rule 2 is blocking HTTPS access (port 443). Changing Rule 4 allows access on UDP but is a higher priority number than Rule. Changing the protocol on Rule 4 to TCP will not help if we don't also change the priority to a lower number.

References:

<https://docs.microsoft.com/en-us/azure/virtual-network/security-overview>

## Question Set 1

### QUESTION 1

You have an Azure Active Directory (Azure AD) tenant named contoso.onmicrosoft.com.

You hire a temporary vendor. The vendor uses a Microsoft account that has a sign-in of user1@outlook.com.

You need to ensure that the vendor can authenticate to the tenant by using user1@outlook.com.

What should you do?

<https://vceplus.com/>

- A. From the Azure portal, add a custom domain name, create a new Azure AD user, and then specify user1@outlook.com as the username.
- B. From Azure Cloud Shell, run the `New-AzureADUser` cmdlet and specify the `-UserPrincipalName user1@outlook.com` parameter.
- C. From the Azure portal, add a new guest user, and then specify user1@outlook.com as the email address.
- D. From Windows PowerShell, run the `New-AzureADUser` cmdlet and specify the `-UserPrincipalName user1@outlook.com` parameter.

**Correct Answer:** D

**Section:** [none]

**Explanation**

**Explanation/Reference:**

Explanation:

UserPrincipalName - contains the UserPrincipalName (UPN) of this user. The UPN is what the user will use when they sign in into Azure AD. The common structure is @, so for Abby Brown in Contoso.com, the UPN would be AbbyB@contoso.com

Example:

To create the user, call the `New-AzureADUser` cmdlet with the parameter values:

```
powershell New-AzureADUser -AccountEnabled $True -DisplayName "Abby Brown" -PasswordProfile $PasswordProfile -MailNickName "AbbyB"
UserPrincipalName "AbbyB@contoso.com"
```

References: <https://docs.microsoft.com/bs-cyrl-ba/powershell/azure/active-directory/new-user-sample?view=azureadps-2.0>

## QUESTION 2

You have an Azure Active Directory (Azure AD) tenant named contosocloud.onmicrosoft.com.

Your company has a public DNS zone for contoso.com.

You add contoso.com as a custom domain name to Azure AD.

You need to ensure that Azure can verify the domain name.

Which type of DNS record should you create?

- A. MX
- B. SRV
- C. DNSKEY

<https://vceplus.com/>

D. NSEC

**Correct Answer:** A

**Section:** [none]

**Explanation**

**Explanation/Reference:**

References: <https://docs.microsoft.com/en-us/azure/dns/dns-web-sites-custom-domain>

### QUESTION 3

You set the multi-factor authentication status for a user named admin1@contoso.com to **Enabled**.

Admin1 accesses the Azure portal by using a web browser.

Which additional security verifications can Admin1 use when accessing the Azure portal?

- A. a phone call, a text message that contains a verification code, and a notification or a verification code sent from the Microsoft Authenticator app
- B. an app password, a text message that contains a verification code, and a notification sent from the Microsoft Authenticator app
- C. an app password, a text message that contains a verification code, and a verification code sent from the Microsoft Authenticator app
- D. a phone call, an email message that contains a verification code, and a text message that contains an app password

**Correct Answer:** A

**Section:** [none]

**Explanation**

**Explanation/Reference:**

### QUESTION 4

Your company has a main office in London that contains 100 client computers.

Three years ago, you migrated to Azure Active Directory (Azure AD).

The company's security policy states that all personal devices and corporate-owned devices must be registered or joined to Azure AD.

A remote user named User1 is unable to join a personal device to Azure AD from a home network.

You verify that other users can join their devices to Azure AD.

You need to ensure that User1 can join the device to Azure AD.

<https://vceplus.com/>

What should you do?

- A. From the Device settings blade, modify the **Users may join devices to Azure AD** setting.
- B. From the Device settings blade, modify the **Maximum number of devices per user** setting.
- C. Create a point-to-site VPN from the home network of User1 to Azure.
- D. Assign the User administrator role to User1.

**Correct Answer:** B

**Section:** [none]

**Explanation**

**Explanation/Reference:**

Explanation:

The Maximum number of devices setting enables you to select the maximum number of devices that a user can have in Azure AD. If a user reaches this quota, they will not be able to add additional devices until one or more of the existing devices are removed.

Incorrect Answers:

A: The Users may join devices to Azure AD setting enables you to select the users who can join devices to Azure AD. Options are All, Selected and None. The default is All.

C: Azure AD Join enables users to join their devices to Active Directory from anywhere as long as they have connectivity with the Internet.

References:

<https://docs.microsoft.com/en-us/azure/active-directory/devices/device-management-azure-portal>

<http://techgenix.com/pros-and-cons-azure-ad-join/>

## QUESTION 5

You have an Azure DNS zone named adatum.com.

You need to delegate a subdomain named research.adatum.com to a different DNS server in Azure.

What should you do?

- A. Create an A record named \*.research in the adatum.com zone.
- B. Create a PTR record named research in the adatum.com zone.
- C. Modify the SOA record of adatum.com.
- D. Create an NS record named research in the adatum.com zone.

**Correct Answer:** D

<https://vceplus.com/>



**Section: [none]**

**Explanation**

**Explanation/Reference:**

Explanation:

You need to create a name server (NS) record for the zone.

References: <https://docs.microsoft.com/en-us/azure/dns/delegate-subdomain>

## **QUESTION 6**

### **SIMULATION**

Please wait while the virtual machine loads. Once loaded, you may proceed to the lab section. This may take a few minutes, and the wait time will not be deducted from your overall test time.

When the Next button is available, click it to access the lab section. In this section, you will perform a set of tasks in a live environment. While most functionality will be available to you as it would be in a live environment, some functionality (e.g. copy and paste, ability to navigate to external websites) will not be possible by design.

Scoring is based on the outcome of performing the tasks stated in the lab. In other words, it doesn't matter how you accomplish the task, if you successfully perform it, you will earn credit for that task.

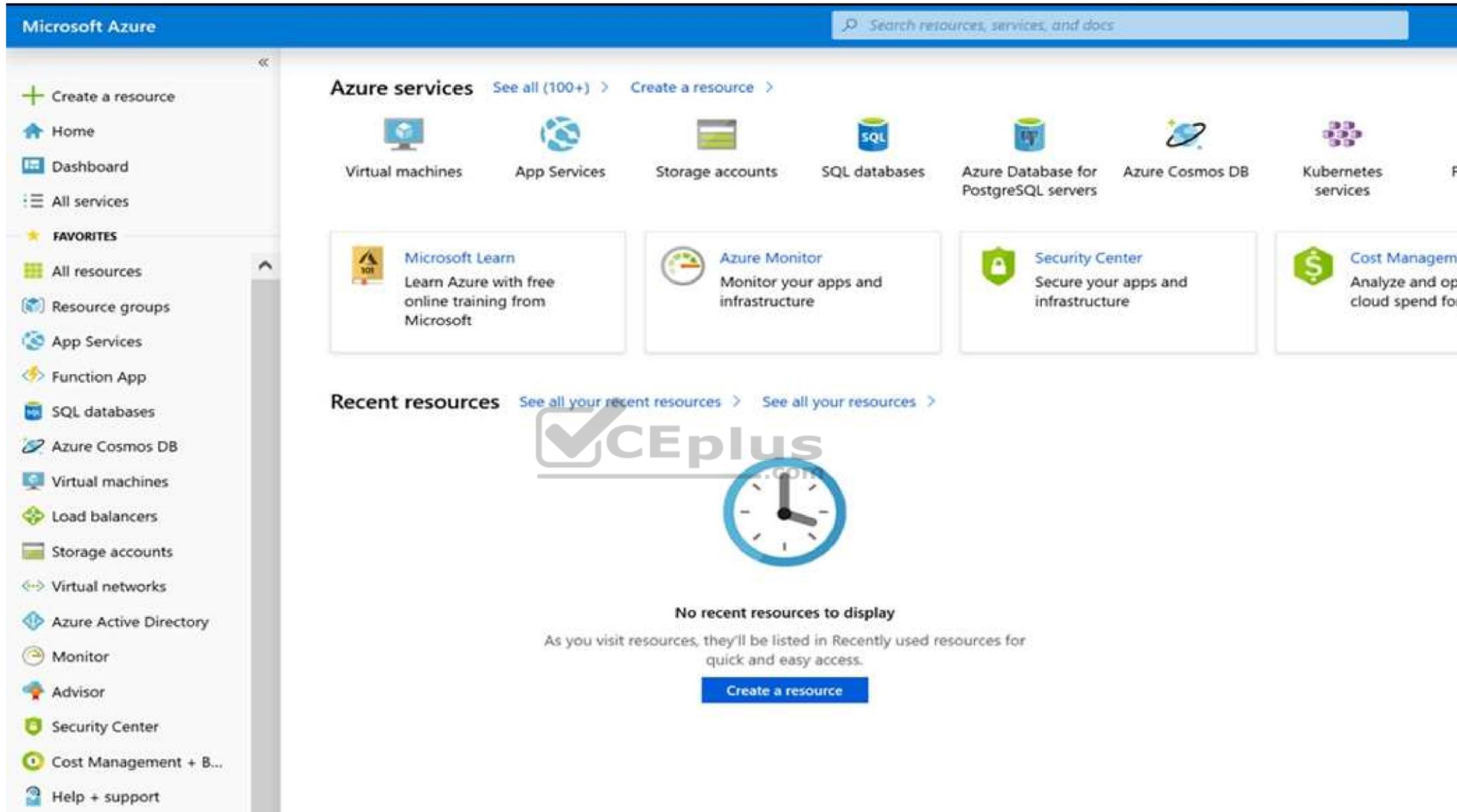
Labs are not timed separately, and this exam may have more than one lab that you must complete. You can use as much time as you would like to complete each lab. But, you should manage your time appropriately to ensure that you are able to complete the lab(s) and all other sections of the exam in the time provided.

Please note that once you submit your work by clicking the Next button within a lab, you will NOT be able to return to the lab.

You may now click next to proceed to the lab.



<https://vceplus.com/>



Task 7 You plan to deploy several Azure virtual machines and to connect them to a virtual network named VNET1007.

You need to ensure that future virtual machines on VNET1007 can register their name in an internal DNS zone named corp9172795.com. The zone must **NOT** be hosted on a virtual machine.

<https://vceplus.com/>

What should you do from Azure Cloud Shell?

**To complete this task, start Azure Cloud Shell and select PowerShell (Linux). Click Show Advanced Settings, and then enter corp9172795n1 in the Storage account text box and File1 in the File share text box. Click Create storage, and then complete the task.**

**Correct Answer:** See solution below.

**Section:** [none]

**Explanation**

**Explanation/Reference:**

Explanation:

Step 1: New-AzureRMResourceGroup -name MyResourceGroup

Before you create the DNS zone, create a resource group to contain the DNS zone.

Step 2: New-AzureRmDnsZone -Name corp9172795.com -ResourceGroupName MyResourceGroup

A DNS zone is created by using the New-AzureRmDnsZone cmdlet. This creates a DNS zone called corp9172795.com in the resource group called MyResourceGroup.

References: <https://docs.microsoft.com/en-us/azure/dns/dns-getstarted-powershell>



## QUESTION 7

### HOTSPOT

You have an Azure Active Directory (Azure AD) tenant named adatum.com. Adatum.com contains the groups in the following table:

Name	Group Type	Membership type	Membership rule
Group1	Security	Dynamic user	<code>(user.city -startsWith "m")</code>
Group2	Microsoft Office 365	Dynamic user	<code>(user.department -notIn ["human resources"])</code>
Group3	Microsoft Office 365	Assigned	<i>Not applicable</i>

You create two user accounts that are configured as shown in the following table.

Name	City	Department	Office 365 license assigned
User1	Montreal	Human resources	Yes
User2	Melbourne	Marketing	No

To which groups do User1 and User2 belong? To answer, select the appropriate options in the answer area.

<https://vceplus.com/>

**NOTE:** Each correct selection is worth one point.

**Hot Area:**



<https://vceplus.com/>

## Answer Area

User1: 

	▼
Group1 only	
Group2 only	
Group3 only	
Group1 and Group2 only	
Group1 and Group3 only	
Group2 and Group3 only	
Group1, Group2, and Group3	

User2: 

	▼
Group1 only	
Group2 only	
Group3 only	
Group1 and Group2 only	
Group1 and Group3 only	
Group2 and Group3 only	
Group1, Group2, and Group3	

Correct Answer:

<https://vceplus.com/>

## Answer Area

User1:

	▼
Group1 only	
Group2 only	
Group3 only	
Group1 and Group2 only	
Group1 and Group3 only	
Group2 and Group3 only	
Group1, Group2, and Group3	

User2:

	▼
Group1 only	
Group2 only	
Group3 only	
Group1 and Group2 only	
Group1 and Group3 only	
Group2 and Group3 only	
Group1, Group2, and Group3	

Section: [none]  
Explanation

**Explanation/Reference:**

Explanation:

Box 1: Group 1 only  
First rule applies

Box 2: Group1 and Group2 only  
Both membership rules apply.

References: <https://docs.microsoft.com/en-us/scm/core/clients/manage/collections/create-collections>

**QUESTION 8**

You have an Azure Active Directory (Azure AD) tenant named contoso.onmicrosoft.com.

The User administrator role is assigned to a user named Admin1.

An external partner has a Microsoft account that uses the user1@outlook.com sign in.

Admin1 attempts to invite the external partner to sign in to the Azure AD tenant and receives the following error message: "Unable to invite user user1@outlook.com – Generic authorization exception."

You need to ensure that Admin1 can invite the external partner to sign in to the Azure AD tenant.

What should you do?

- A. From the Roles and administrators blade, assign the Security administrator role to Admin1.
- B. From the Organizational relationships blade, add an identity provider.
- C. From the Custom domain names blade, add a custom domain.
- D. From the Users blade, modify the External collaboration settings.

**Correct Answer: D**

**Section: [none]**

**Explanation**

**Explanation/Reference:**

References: <https://techcommunity.microsoft.com/t5/Azure-Active-Directory/Generic-authorization-exception-inviting-Azure-AD-gests/td-p/274742>

**QUESTION 9**

<https://vceplus.com/>



Your company has an Azure Active Directory (Azure AD) tenant named contoso.com that is configured for hybrid coexistence with the on-premises Active Directory domain. The tenant contains the users shown in the following table.

Name	User Type	Source	Sign-in
User1	Member	Azure AD	User1@contoso.com
User2	Member	Windows Server Active Directory	User2@contoso.com
User3	Guest	Multiple	User3@outlook.com
User4	Guest	Multiple	User4@gmail.com

Whenever possible, you need to enable Azure Multi-Factor Authentication (MFA) for the users in contoso.com.

Which users should you enable for Azure MFA?

- A. User1 only
- B. User1, User2, and User3 only
- C. User1 and User2 only
- D. User1, User2, User3, and User4
- E. User2 only

**Correct Answer:** D

**Section:** [none]

**Explanation**

**Explanation/Reference:**

#### QUESTION 10

You have two Azure Active Directory (Azure AD) tenants named contoso.com and fabrikam.com.

You have a Microsoft account that you use to sign in to both tenants.

You need to configure the default sign-in tenant for the Azure portal.

What should you do?

- A. From Azure Cloud Shell, run `Set-AzureRmSubscription`.
- B. From Azure Cloud Shell, run `Set-AzureRmContext`.
- C. From the Azure portal, configure the portal settings.

<https://vceplus.com/>

D. From the Azure portal, change the directory.

**Correct Answer:** B

**Section:** [none]

**Explanation**

**Explanation/Reference:**

Explanation:

The Set-AzureRmContext cmdlet sets authentication information for cmdlets that you run in the current session. The context includes tenant, subscription, and environment information.

References: <https://docs.microsoft.com/en-us/powershell/module/azurerm.profile/set-azurearmcontext>

#### **QUESTION 11**

You have an Azure Active Directory (Azure AD) tenant.

All administrators must enter a verification code to access the Azure portal.

You need to ensure that the administrators can access the Azure portal only from your on-premises network.

What should you configure?

- A. an Azure AD Identity Protection user risk policy.
- B. the multi-factor authentication service settings.
- C. the default for all the roles in Azure AD Privileged Identity Management
- D. an Azure AD Identity Protection sign-in risk policy

**Correct Answer:** B

**Section:** [none]

**Explanation**

**Explanation/Reference:**

#### **QUESTION 12**

You have an Active Directory forest named contoso.com.

You install and configure Azure AD Connect to use password hash synchronization as the single sign-on (SSO) method. Staging mode is enabled.

You review the synchronization results and discover that the Synchronization Service Manager does not display any sync jobs.

<https://vceplus.com/>

You need to ensure that the synchronization completes successfully.

What should you do?

- A. Run Azure AD Connect and set the SSO method to Pass-through Authentication.
- B. From Synchronization Service Manager, run a full import.
- C. From Azure PowerShell, run `Start-AdSyncSyncCycle -PolicyType Initial`.
- D. Run Azure AD Connect and disable staging mode.

**Correct Answer:** D

**Section:** [none]

**Explanation**

**Explanation/Reference:**

Explanation:

Staging mode must be disabled. If the Azure AD Connect server is in staging mode, password hash synchronization is temporarily disabled.

References: <https://docs.microsoft.com/en-us/azure/active-directory/connect/active-directory-aadconnectsync-troubleshoot-password-hash-synchronization#no-passwords-are-synchronized-troubleshoot-by-using-the-troubleshooting-task>

### QUESTION 13

You have an Azure Active Directory (Azure AD) tenant named contosocloud.onmicrosoft.com.

Your company has a public DNS zone for contoso.com.

You add contoso.com as a custom domain name to Azure AD.

You need to ensure that Azure can verify the domain name.

Which type of DNS record should you create?

- A. SRV
- B. PTR
- C. RRSIG
- D. TXT

**Correct Answer:** D

**Section:** [none]

**Explanation**

<https://vceplus.com/>

**Explanation/Reference:**

References: <https://docs.microsoft.com/en-us/azure/active-directory/fundamentals/add-custom-domain>

**QUESTION 14**

You sign up for Azure Active Directory (Azure AD) Premium.

You need to add a user named admin1@contoso.com as an administrator on all the computers that will be joined to the Azure AD domain.

What should you configure in Azure AD?

- A. Providers from the MFA Server blade
- B. Device settings from the Groups blade
- C. General settings from the Groups blade
- D. User settings from the Users blade

**Correct Answer:** A

**Section:** [none]

**Explanation**

**Explanation/Reference:**

Explanation:

When you connect a Windows device with Azure AD using an Azure AD join, Azure AD adds the following security principles to the local administrators group on the device:

- The Azure AD global administrator role
- The Azure AD device administrator role

The user performing the Azure AD join

In the Azure portal, you can manage the device administrator role on the Devices page. To open the Devices page:

1. Sign in to your Azure portal as a global administrator or device administrator.
2. On the left navbar, click Azure Active Directory.
3. In the Manage section, click Devices.
4. On the Devices page, click Device settings.
5. To modify the device administrator role, configure Additional local administrators on Azure AD joined devices.

References: <https://docs.microsoft.com/en-us/azure/active-directory/devices/assign-local-admin>

**QUESTION 15**

HOTSPOT



You have an Azure Active Directory (Azure AD) tenant.

You need to create a conditional access policy that requires all users to use multi-factor authentication when they access the Azure portal.

Which three settings should you configure? To answer, select the appropriate settings in the answer area.

**NOTE:** Each correct selection is worth one point.

**Hot Area:**



## Answer Area

\* Name

Policy1



### Assignments

Users and groups ⓘ

0 users and groups selected



Cloud apps ⓘ

0 cloud apps selected



Conditions ⓘ

0 conditions selected



### Access controls

Grant ⓘ

0 controls selected



Session ⓘ

0 controls selected



Enable policy

On

Off

**Correct Answer:**



<https://vceplus.com/>

## Answer Area

\* Name

Policy1



### Assignments

Users and groups ⓘ

0 users and groups selected



Cloud apps ⓘ

0 cloud apps selected



Conditions ⓘ

0 conditions selected



### Access controls

Grant ⓘ

0 controls selected



Session ⓘ

0 controls selected



Enable policy

On

Off



**Section: [none]**  
**Explanation**

**Explanation/Reference:**

Explanation:

Reference:

<https://docs.microsoft.com/en-us/azure/active-directory/conditional-access/app-based-mfa>

**QUESTION 16**

You have an Azure Active Directory (Azure AD) tenant.

You have an existing Azure AD conditional access policy named Policy1. Policy1 enforces the use of Azure AD-joined devices when members of the Global Administrators group authenticate to Azure AD from untrusted locations.

You need to ensure that members of the Global Administrators group will also be forced to use multi-factor authentication when authenticating from untrusted locations.

What should you do?

- A. From the Azure portal, modify session control of Policy1.
- B. From the multi-factor authentication page, modify the user settings.
- C. From the Azure portal, modify grant control of Policy1.
- D. From the multi-factor authentication page, modify the service settings.



**Correct Answer: C**

**Section: [none]**

**Explanation**

**Explanation/Reference:**

Explanation:

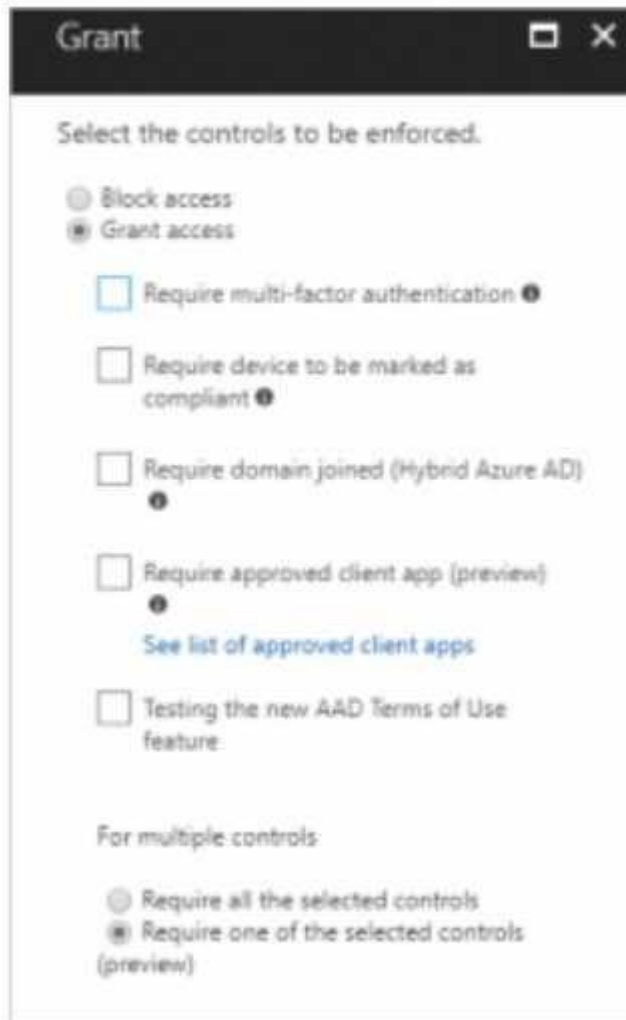
There are two types of controls: ▪

Grant controls – To gate access

▪ Session controls – To restrict access to a session

Grant controls oversee whether a user can complete authentication and reach the resource that they're attempting to sign-in to. If you have multiple controls selected, you can configure whether all of them are required when your policy is processed. The current implementation of Azure Active Directory enables you to set the following grant control requirements:

<https://vceplus.com/>



Reference: <https://blog.lumen21.com/2017/12/15/conditional-access-in-azure-active-directory/>

#### QUESTION 17

From the MFA Server blade, you open the **Block/unblock users** blade as shown in the exhibit.

<https://vceplus.com/>

## Block/unblock users

A blocked user will not receive Multi-Factor Authentication requests. Authentication attempts for that user will be automatically denied. A user will remain blocked for 90 days from the time they are blocked. To manually unblock a user, click the "Unblock" action.

### Blocked users

USER	REASON	DATE	ACTION
AlexW@M365x832514.OnMicrosoft.com	Lost phone	06/14/2018, 8:26:38 PM	<a href="#">Unblock</a>

What caused AlexW to be blocked?

- A. The user account password expired.
- B. The user entered an incorrect PIN four times within 10 minutes.
- C. An administrator manually blocked the user.
- D. The user reported a fraud alert when prompted for additional authentication.

**Correct Answer: C**

**Section: [none]**

**Explanation**

**Explanation/Reference:**

Explanation:

An Administrator can block a user:

1. Sign in to the Azure portal as an administrator.
2. Browse to Azure Active Directory > MFA > Block/unblock users.
3. Select Add to block a user.
4. Select the Replication Group. Enter the username for the blocked user as username@domain.com. Enter a comment in the Reason field, for example: Lost phone.
5. Select Add to finish blocking the user.

<https://vceplus.com/>

Reference:

<https://docs.microsoft.com/en-us/azure/active-directory/authentication/howto-mfa-mfasettings>



<https://vceplus.com/>

## Testlet 2

### Case study

This is a case study. **Case studies are not timed separately. You can use as much exam time as you would like to complete each case.** However, there may be additional case studies and sections on this exam. You must manage your time to ensure that you are able to complete all questions included on this exam in the time provided.

To answer the questions included in a case study, you will need to reference information that is provided in the case study. Case studies might contain exhibits and other resources that provide more information about the scenario that is described in the case study. Each question is independent of the other questions in this case study.

At the end of this case study, a review screen will appear. This screen allows you to review your answers and to make changes before you move to the next section of the exam. After you begin a new section, you cannot return to this section.

### To start the case study

To display the first question in this case study, click the **Next** button. Use the buttons in the left pane to explore the content of the case study before you answer the questions. Clicking these buttons displays information such as business requirements, existing environment, and problem statements. If the case study has an **All Information** tab, note that the information displayed is identical to the information displayed on the subsequent tabs. When you are ready to answer a question, click the **Question** button to return to the question. **Overview**

Contoso, Ltd. is a consulting company that has a main office in Montreal and two branch offices in Seattle and New York.

The Montreal office has 2,000 employees. The Seattle office has 1,000 employees. The New York office has 200 employees.

All the resources used by Contoso are hosted on-premises.

Contoso creates a new Azure subscription. The Azure Active Directory (Azure AD) tenant uses a domain named contoso.onmicrosoft.com. The tenant uses the P1 pricing tier.

### Existing Environment

The network contains an Active Directory forest named contoso.com. All domain controllers are configured as DNS servers and host the contoso.com DNS zone.

Contoso has finance, human resources, sales, research, and information technology departments. Each department has an organizational unit (OU) that contains all the accounts of that respective department. All the user accounts have the **department** attribute set to their respective department. New users are added frequently.

Contoso.com contains a user named User1.

All the offices connect by using private links.

<https://vceplus.com/>

Contoso has data centers in the Montreal and Seattle offices. Each data center has a firewall that can be configured as a VPN device.

All infrastructure servers are virtualized. The virtualization environment contains the servers in the following table.

Name	Role	Contains virtual machine
Server1	VMWare vCenter server	VM1
Server2	Hyper-V-host	VM2

Contoso uses two web applications named App1 and App2. Each instance on each web application requires 1GB of memory.

The Azure subscription contains the resources in the following table.

Name	Type
VNet1	Virtual network
VM3	Virtual machine
VM4	Virtual machine

The network security team implements several network security groups (NSGs).

### Planned Changes

Contoso plans to implement the following changes:

- Deploy Azure ExpressRoute to the Montreal office.
- Migrate the virtual machines hosted on Server1 and Server2 to Azure.
- Synchronize on-premises Active Directory to Azure Active Directory (Azure AD).
- Migrate App1 and App2 to two Azure web apps named WebApp1 and WebApp2.

### Technical requirements

Contoso must meet the following technical requirements:

- Ensure that WebApp1 can adjust the number of instances automatically based on the load and can scale up to five instances.
  - Ensure that VM3 can establish outbound connections over TCP port 8080 to the applications servers in the Montreal office.
  - Ensure that routing information is exchanged automatically between Azure and the routers in the Montreal office.
  - Ensure Azure Multi-Factor Authentication (MFA) for the users in the finance department only.
  - Ensure that webapp2.azurewebsites.net can be accessed by using the name app2.contoso.com
- 
- Connect the New York office to VNet1 over the Internet by using an encrypted connection.
  - Create a workflow to send an email message when the settings of VM4 are modified.

<https://vceplus.com/>

- Create a custom Azure role named Role1 that is based on the Reader role. ▪
- Minimize costs whenever possible.

### QUESTION 1

You need to recommend a solution to automate the configuration for the finance department users. The solution must meet the technical requirements.

What should you include in the recommendation?

- A. Azure AD B2C
- B. Azure AD Identity Protection
- C. an Azure logic app and the Microsoft Identity Management (MIM) client
- D. dynamic groups and conditional access policies

**Correct Answer:** D

**Section:** [none]

**Explanation**

**Explanation/Reference:**

Explanation:

Scenario: Ensure Azure Multi-Factor Authentication (MFA) for the users in the finance department only.

The recommendation is to use conditional access policies that can then be targeted to groups of users, specific applications, or other conditions.

References:

<https://docs.microsoft.com/en-us/azure/active-directory/authentication/howto-mfa-userstates>

### Testlet 3

#### Case study

This is a case study. **Case studies are not timed separately. You can use as much exam time as you would like to complete each case.** However, there may be additional case studies and sections on this exam. You must manage your time to ensure that you are able to complete all questions included on this exam in the time provided.

To answer the questions included in a case study, you will need to reference information that is provided in the case study. Case studies might contain exhibits and other resources that provide more information about the scenario that is described in the case study. Each question is independent of the other questions in this case study.

At the end of this case study, a review screen will appear. This screen allows you to review your answers and to make changes before you move to the next section of the exam. After you begin a new section, you cannot return to this section.

<https://vceplus.com/>

### **To start the case study**

To display the first question in this case study, click the **Next** button. Use the buttons in the left pane to explore the content of the case study before you answer the questions. Clicking these buttons displays information such as business requirements, existing environment, and problem statements. If the case study has an **All Information** tab, note that the information displayed is identical to the information displayed on the subsequent tabs. When you are ready to answer a question, click the **Question** button to return to the question. **Overview**

Humongous Insurance is an insurance company that has three offices in Miami, Tokyo and Bangkok. Each office has 5,000 users.

### **Existing Environment**

#### **Active Directory Environment**

Humongous Insurance has a single-domain Active Directory forest named humongousinsurance.com. The functional level of the forest is Windows Server 2012.

You recently provisioned an Azure Active Directory (Azure AD) tenant.

#### **Network Infrastructure**

Each office has a local data center that contains all the servers for that office. Each office has a dedicated connection to the Internet.

Each office has several link load balancers that provide access to the servers.

#### **Active Directory Issue**

Several users in humongousinsurance.com have UPNs that contain special characters.

You suspect that some of the characters are unsupported in Azure AD.

#### **Licensing Issue**

You attempt to assign a license in Azure to several users and receive the following error message: "Licenses not assigned. License assignment failed for one user." You verify that the Azure subscription has the available licenses.

#### **Requirements**

#### **Planned Changes**

Humongous Insurance plans to open a new office in Paris. The Paris office will contain 1,000 users who will be hired during the next 12 months. All the resources used by the Paris office users will be hosted in Azure.

#### **Planned Azure AD Infrastructure**

<https://vceplus.com/>



The on-premises Active Directory domain will be synchronized to Azure AD.

All client computers in the Paris office will be joined to an Azure AD domain.

### Planned Azure Networking Infrastructure

You plan to create the following networking resources in a resource group named All\_Resources:

- Default Azure system routes that will be the only routes used to route traffic
- A virtual network named Paris-VNet that will contain two subnets named Subnet1 and Subnet2
- A virtual network named ClientResources-VNet that will contain one subnet named ClientSubnet
- A virtual network named AllOffices-VNet that will contain two subnets named Subnet3 and Subnet4

You plan to enable peering between Paris-VNet and AllOffices-VNet. You will enable the **Use remote gateways** setting for the Paris-VNet peerings.

You plan to create a private DNS zone named humongousinsurance.local and set the registration network to the ClientResources-VNet virtual network.

### Planned Azure Computer Infrastructure

Each subnet will contain several virtual machines that will run either Windows Server 2012 R2, Windows Server 2016, or Red Hat Linux.

### Department Requirements

Humongous Insurance identifies the following requirements for the company's departments:

- Web administrators will deploy Azure web apps for the marketing department. Each web app will be added to a separate resource group. The initial configuration of the web apps will be identical. The web administrators have permission to deploy web apps to resource groups.
- During the testing phase, auditors in the finance department must be able to review all Azure costs from the past week.

### Authentication Requirements

Users in the Miami office must use Azure Active Directory Seamless Single Sign-on (Azure AD Seamless SSO) when accessing resources in Azure.

### QUESTION 1

You need to prepare the environment to meet the authentication requirements.

Which two actions should you perform? Each correct answer presents part of the solution.

**NOTE:** Each correct selection is worth one point.

- A. Install the Active Directory Federation Services (AD FS) role on a domain controller in the Miami office.
- B. Allow inbound TCP port 8080 to the domain controllers in the Miami office.

<https://vceplus.com/>

- C. Join the client computers in the Miami office to Azure AD.
- D. Add <http://autologon.microsoftazuread-ss0.com> to the intranet zone of each client computer in the Miami office.
- E. Install Azure AD Connect on a server in the Miami office and enable Pass-through Authentication.

**Correct Answer:** DE

**Section:** [none]

**Explanation**

**Explanation/Reference:**

Explanation:

D: You can gradually roll out Seamless SSO to your users. You start by adding the following Azure AD URL to all or selected users' Intranet zone settings by using Group Policy in Active Directory: <https://autologon.microsoftazuread-ss0.com>

E: Seamless SSO works with any method of cloud authentication - Password Hash Synchronization or Pass-through Authentication, and can be enabled via Azure AD Connect.

Incorrect Answers:

A: Seamless SSO is not applicable to Active Directory Federation Services (ADFS).

B: Azure AD connect does not port 8080. It uses port 443.

C: Seamless SSO needs the user's device to be domain-joined, but doesn't need for the device to be Azure AD Joined.

Scenario: Users in the Miami office must use Azure Active Directory Seamless Single Sign-on (Azure AD Seamless SSO) when accessing resources in Azure. Planned Azure AD Infrastructure include: The on-premises Active Directory domain will be synchronized to Azure AD.

References:

<https://docs.microsoft.com/en-us/azure/active-directory/connect/active-directory-aadconnect-ss0-quick-start>



<https://vceplus.com/>

<https://vceplus.com/>